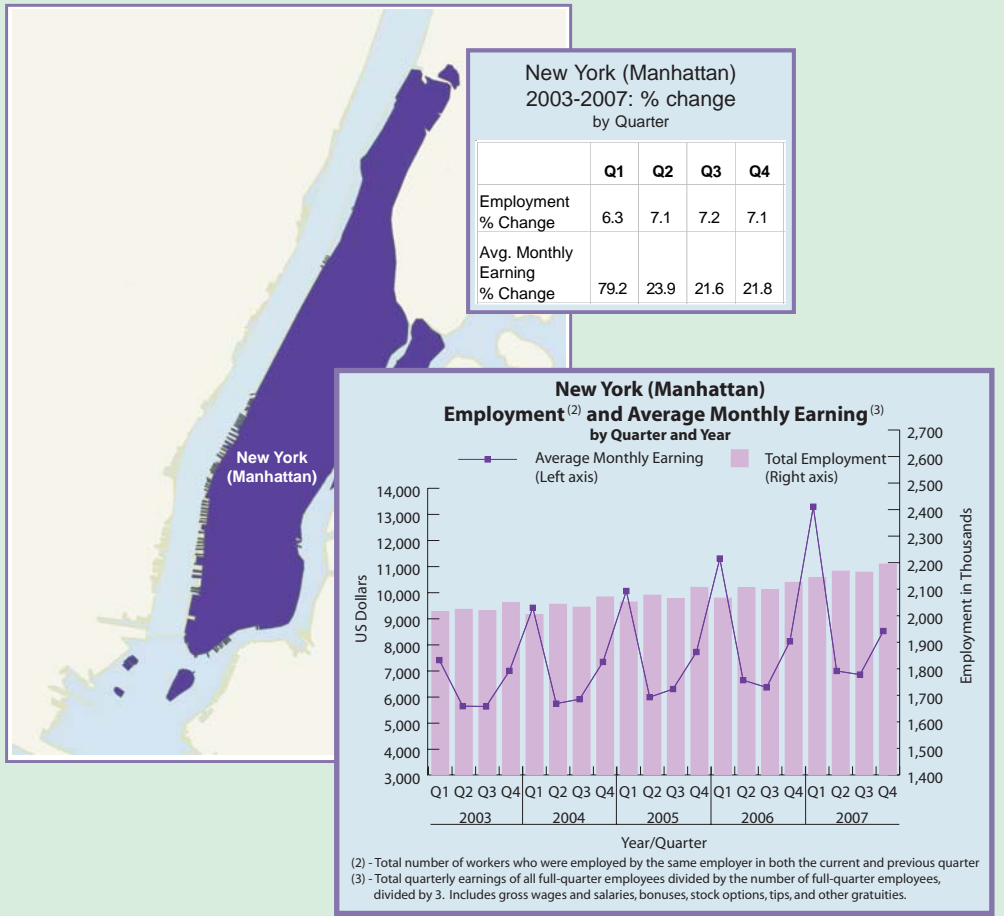
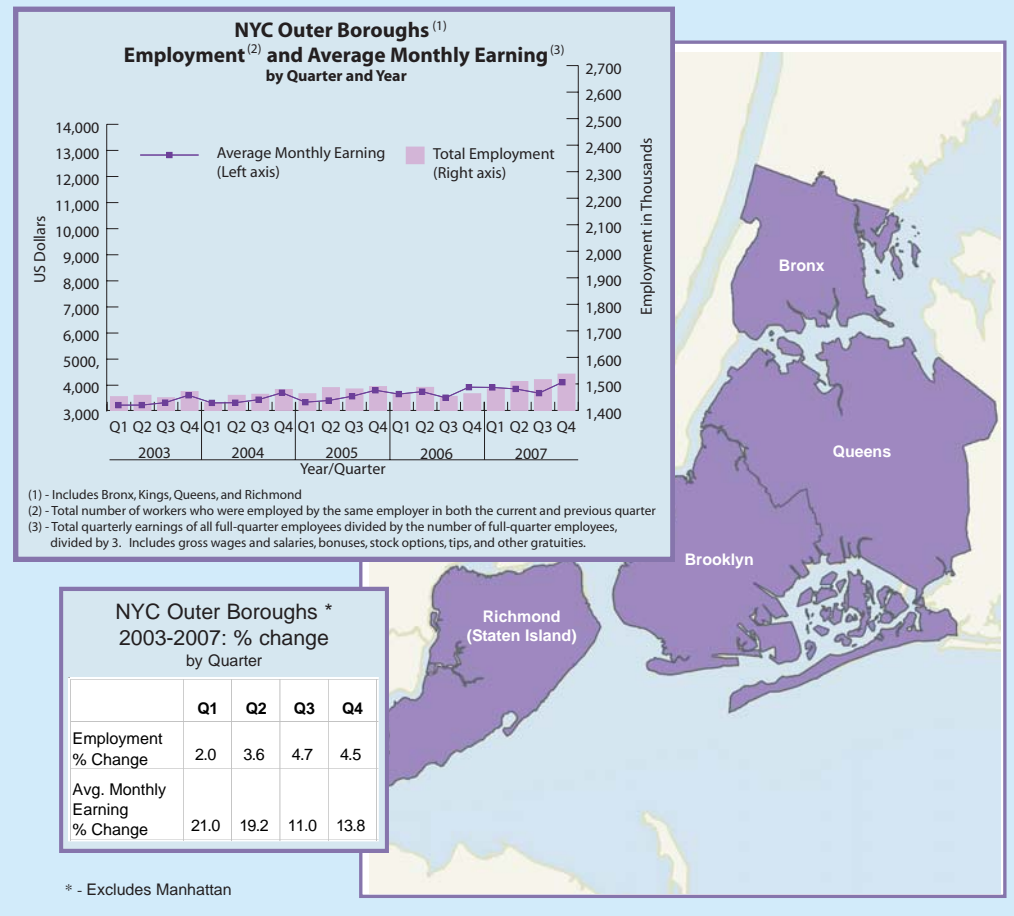


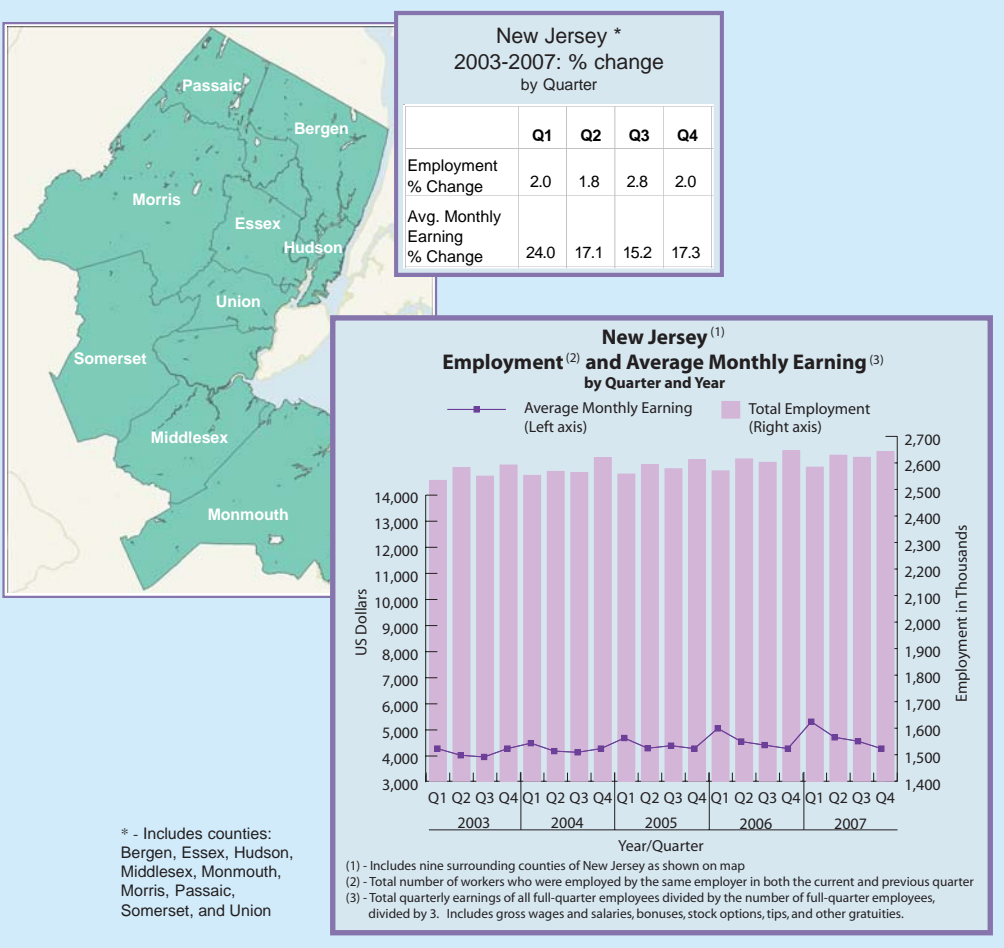
New York Borough Employment and Earning (2003-2007) by Quarter and Year



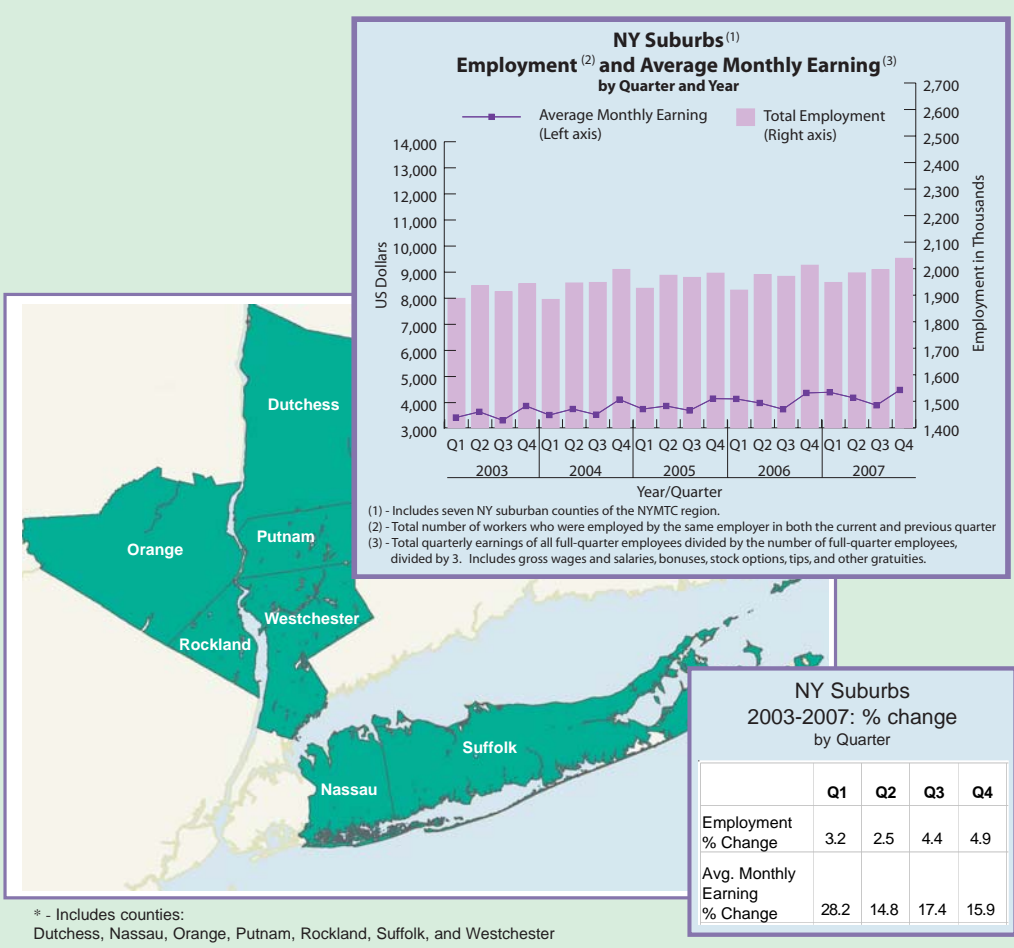
New York City Outer Boroughs * Employment and Earning (2003-2007) by Quarter and Year



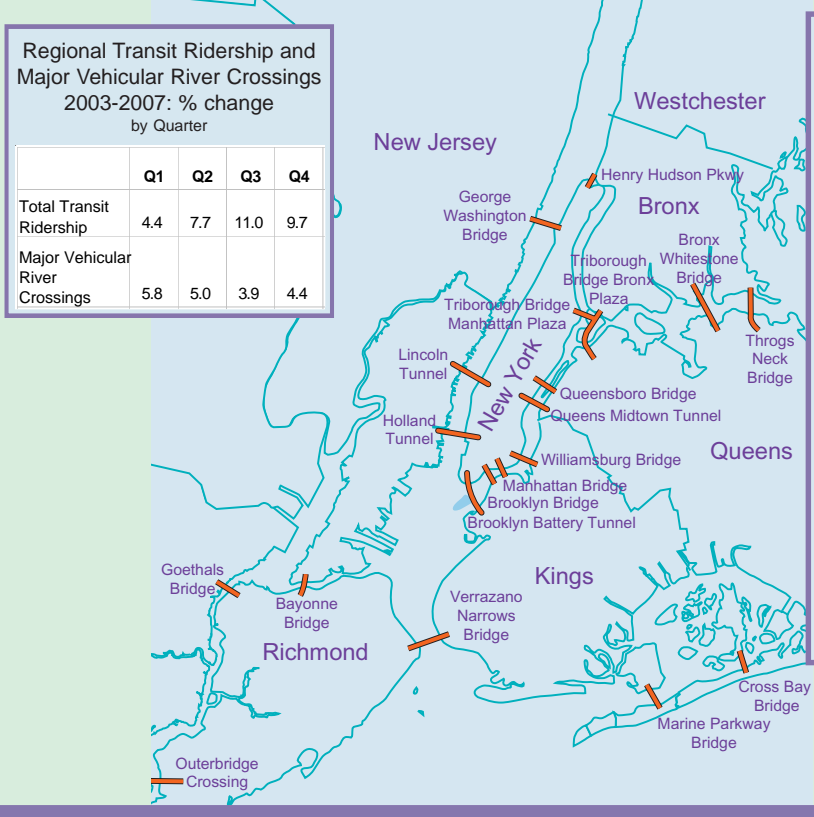
New Jersey * Employment and Earning (2003-2007) by Quarter and Year



New York Suburbs * Employment and Earning (2003-2007) by Quarter and Year



NYMTC Region * Ridership and Vehicle River Crossings (2003-2007) by Quarter and Year



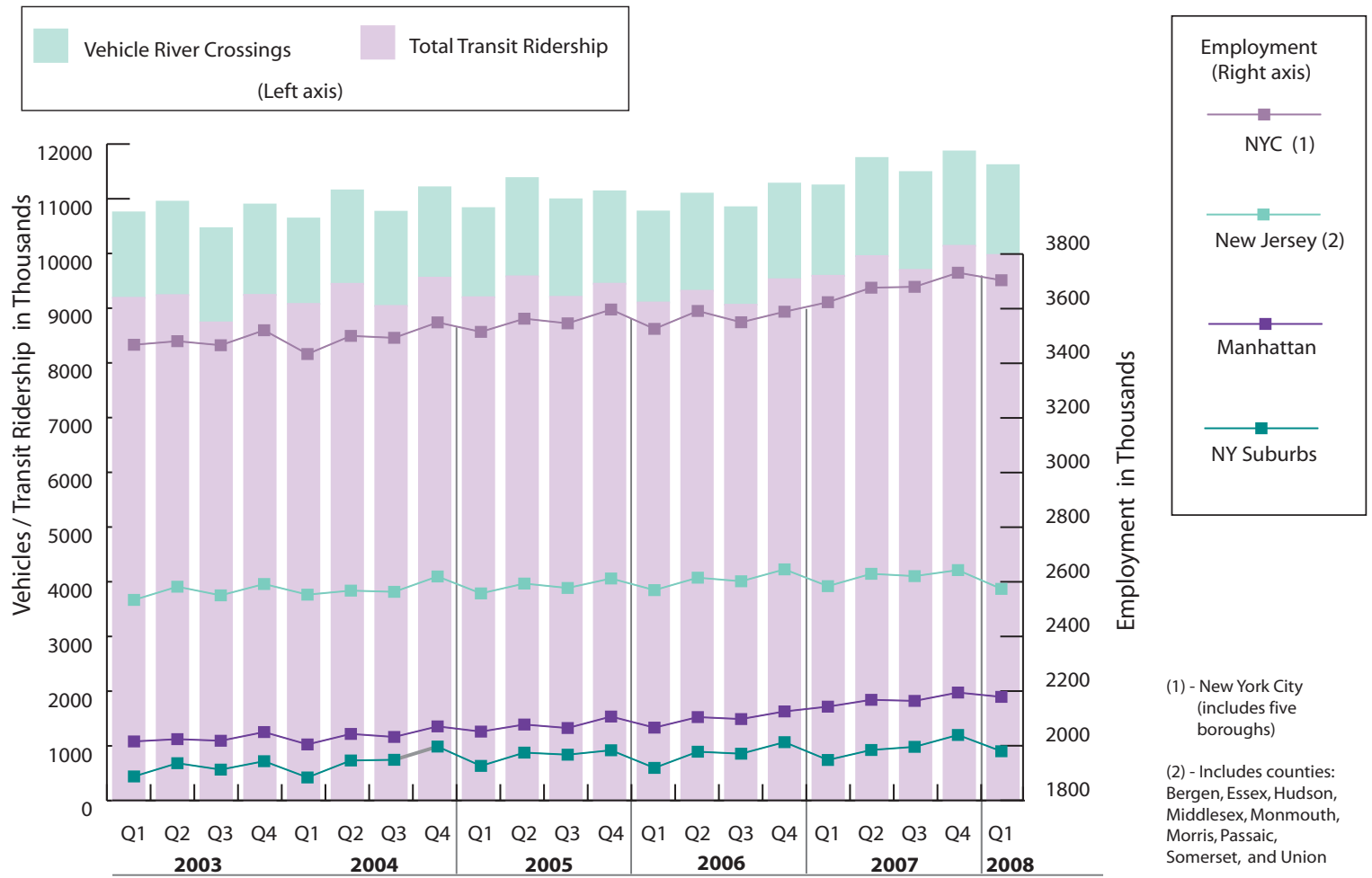
Transportation and Economic Highlights in the NYMTC region* and surrounding New Jersey counties (2003-2007) by Quarter

The New York Metropolitan Transportation Council (NYMTC) is a council of governments that is a collaborative forum for regional transportation planning. NYMTC's Transportation and Economic Highlights brochure presents a set of important economic and transportation statistics for the first time in a quarterly breakdown. The transportation data has been collected and provided by regional transportation operators. The socio-economic data has been derived from regional census data. We hope that you find this brochure useful and informative.

Quarterly Employment by County

Year	Quarter	New York												New Jersey									
		Bronx	Dutchess	Kings	Nassau	New York	Orange	Putnam	Queens	Richmond	Rockland	Suffolk	Westchester	Bergen	Essex	Hudson	Middlesex	Monmouth	Morris	Passaic	Somerset	Union	
2003	Q1	214,842	102,693	694,764	582,002	2,015,713	116,001	22,841	461,305	81,175	114,730	575,922	373,380	453,128	348,739	233,128	398,521	230,751	275,955	171,331	174,481	247,785	
	Q2	213,537	116,314	706,586	586,526	2,024,091	118,899	25,341	453,968	82,764	113,629	588,683	386,653	468,478	360,289	233,296	404,335	235,525	280,856	174,352	173,843	251,170	
	Q3	211,178	114,264	695,084	578,246	2,018,204	118,181	26,474	458,552	83,041	109,524	578,786	387,096	456,450	356,325	229,007	399,695	235,948	281,691	169,235	174,634	247,505	
	Q4	214,535	105,675	704,383	595,564	2,050,040	121,993	24,027	468,060	83,916	111,427	589,545	395,127	455,885	365,580	235,479	410,879	239,673	284,151	173,092	176,121	251,118	
2004	Q1	210,695	100,869	683,525	567,718	2,004,703	115,573	23,237	453,360	81,600	110,295	589,222	376,905	455,154	355,439	233,928	400,440	233,139	278,713	178,613	172,618	245,003	
	Q2	210,752	115,711	693,319	589,331	2,043,210	117,979	23,040	470,359	82,643	113,227	604,746	381,951	463,117	350,679	233,484	404,119	235,809	284,600	181,047	170,794	244,137	
	Q3	211,366	113,877	695,258	588,050	2,032,131	118,108	23,449	471,291	83,139	115,110	606,926	382,965	455,406	348,787	231,300	407,674	243,703	285,762	178,836	173,420	238,490	
	Q4	217,656	116,249	699,644	600,050	2,070,758	121,927	24,604	476,203	85,426	117,409	617,298	399,406	467,839	360,916	238,507	410,661	246,573	288,095	185,946	176,992	244,098	
2005	Q1	212,877	111,495	704,599	578,311	2,051,736	116,691	24,576	463,279	82,524	113,995	595,906	385,177	460,720	346,050	235,677	400,975	238,988	283,290	182,749	167,844	241,284	
	Q2	217,337	116,323	715,410	592,096	2,077,586	119,934	24,725	469,587	83,356	115,584	607,038	399,084	461,723	351,450	240,436	410,519	242,804	285,672	184,714	170,400	245,912	
	Q3	213,571	115,901	709,991	585,057	2,064,811	119,292	24,845	474,102	83,738	113,749	608,742	399,637	458,013	349,078	234,495	408,254	248,693	284,689	178,960	173,183	242,135	
	Q4	216,261	115,679	712,775	590,765	2,106,838	119,963	25,705	477,220	83,751	115,900	613,364	402,029	461,247	353,704	239,060	417,841	248,073	282,830	184,004	177,793	247,661	
2006	Q1	214,547	112,477	697,377	573,560	2,066,267	115,511	24,739	465,893	81,928	113,106	589,415	390,050	452,836	343,805	239,187	410,372	242,410	281,562	178,775	172,298	248,399	
	Q2	219,847	118,182	710,745	592,115	2,104,797	120,056	25,686	473,883	82,269	116,262	607,138	398,644	463,367	355,768	228,684	419,483	251,067	289,487	181,039	175,049	251,214	
	Q3	206,817	115,158	691,370	584,002	2,097,625	119,441	25,850	470,645	83,725	114,539	611,674	400,141	459,677	353,521	226,700	416,488	251,691	289,774	178,215	179,503	246,474	
	Q4	207,596	114,891	696,506	603,894	2,125,586	122,120	25,831	473,649	85,513	118,133	622,098	406,084	467,585	363,514	235,492	424,828	250,508	289,683	185,006	178,818	250,141	
2007	Q1	211,966	111,487	709,539	592,782	2,143,043	117,310	25,390	472,799	86,307	111,363	594,889	394,633	454,992	358,816	232,178	417,247	242,497	280,267	181,330	173,030	243,787	
	Q2	217,932	116,073	719,345	596,225	2,168,067	120,150	26,494	483,025	88,306	112,114	610,119	403,220	468,049	364,937	231,669	421,410	247,990	284,894	182,204	177,439	250,779	
	Q3	217,046	113,556	717,731	593,219	2,164,102	120,363	26,648	491,197	89,838	114,864	619,513	407,771	463,267	356,788	228,042	424,930	254,600	286,564	180,359	179,831	246,520	
	Q4	222,951	117,034	729,119	609,195	2,194,686	122,965	27,302	493,760	91,072	118,117	627,887	416,917	470,245	359,676	228,905	425,472	253,491	288,437	183,778	182,043	250,862	
2008	Q1	218,995	112,950	728,584	594,608	2,178,843	120,261	26,096	490,201	87,427	114,034	605,585	406,243	462,531	343,079	229,530	406,701	247,000	281,584	181,671	176,256	245,771	

Quarterly Regional Public Transportation Ridership and Regional Employment



Regional Public Transportation Average Weekday Ridership⁽¹⁾ by Quarter and Year

By	2003				2004				2005				2006				2007				2008
	Q1	Q2	Q3	Q4	Q1	Q2	Q3	Q4	Q1	Q2	Q3	Q4	Q1	Q2	Q3	Q4	Q1	Q2	Q3	Q4	Q1
Bus	3,586,321	3,599,197	3,375,384	3,530,939	3,458,828	3,607,942	3,417,783	3,605,654	3,401,388	3,555,018	3,374,621	3,412,494	3,171,521	3,220,285	3,107,676	3,223,733	3,460,812	3,582,915	3,452,898	3,591,812	3,535,822
Rail	5,477,357	5,505,321	5,227,393	5,584,966	5,520,888	5,726,567	5,508,760	5,849,330	5,708,297	5,928,861	5,726,493	5,933,273	5,841,021	5,999,632	5,855,563	6,210,188	6,042,606	6,269,280	6,138,541	6,449,465	6,339,532
Ferry	126,177	134,725	137,088	126,955	98,087	110,291	114,384	102,559	90,266	98,209	106,253	101,313	91,892	98,280	99,381	94,926	88,386	100,258	107,249	98,321	97,249

(1) - Includes Bus, Rail, and Ferry total number of passengers in the NYMTC region

Major Vehicular River Crossings Average Weekday Traffic⁽²⁾ by Quarter and Year

Number of Vehicles	2003				2004				2005				2006				2007				2008
	Q1	Q2	Q3	Q4	Q1	Q2	Q3	Q4	Q1	Q2	Q3	Q4	Q1	Q2	Q3	Q4	Q1	Q2	Q3	Q4	Q1
	1,561,464	1,708,042	1,721,577	1,652,208	1,573,472	1,733,803	1,733,803	1,692,510	1,628,848	1,795,706	1,783,209	1,688,518	1,663,332	1,776,051	1,781,701	1,747,954	1,651,971	1,793,228	1,788,517	1,724,721	1,641,485

(2) - Includes major vehicular river crossings in the NYMTC region except East River crossings (data not available)