

New York Metropolitan Transportation Council

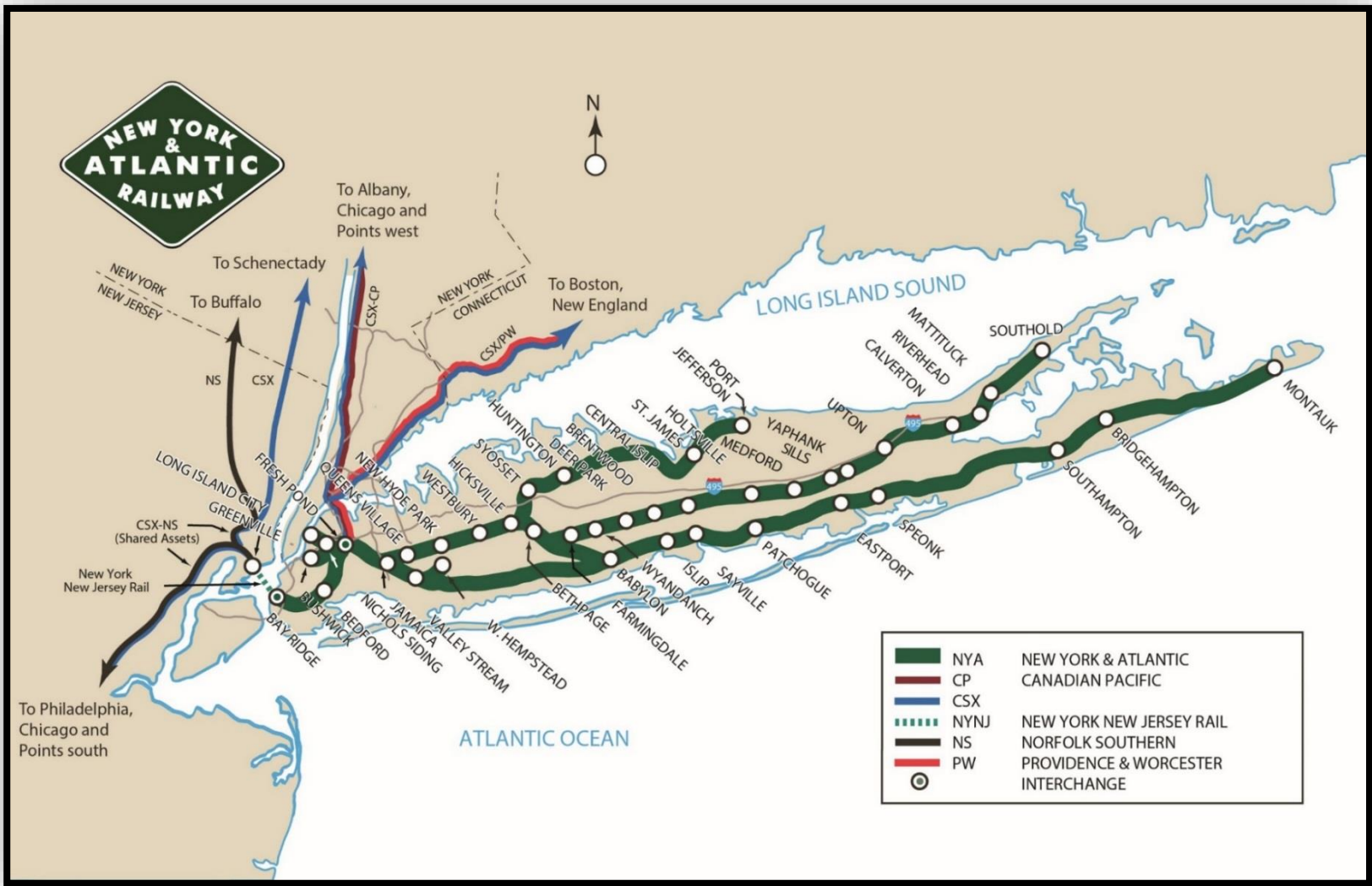
Freight Rail's Positive Impact on the Economy,
Employment, and Environment in the NY Metropolitan Area

December 11, 2019

New York & Atlantic Railway

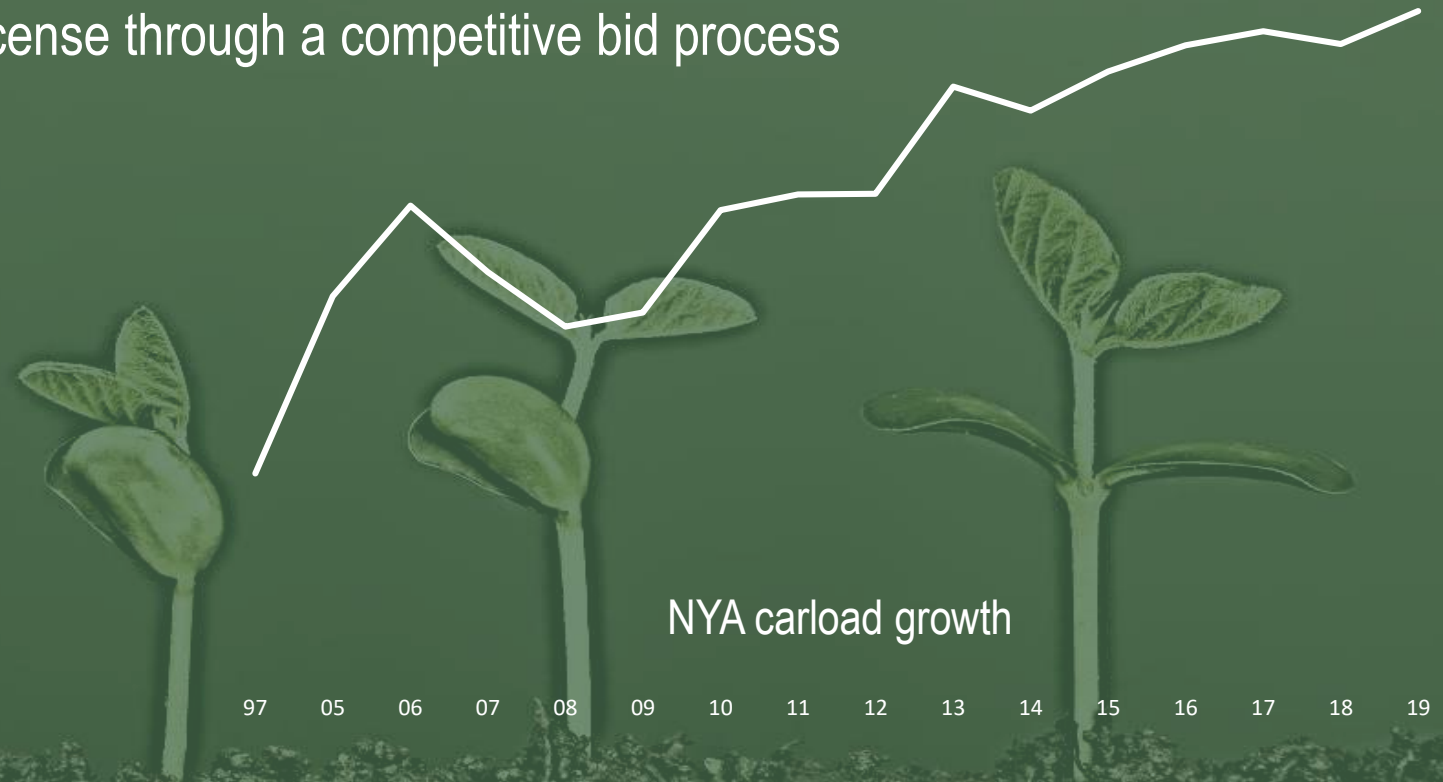
The New York & Atlantic Railway Network

All of Queens, Brooklyn, and Long Island

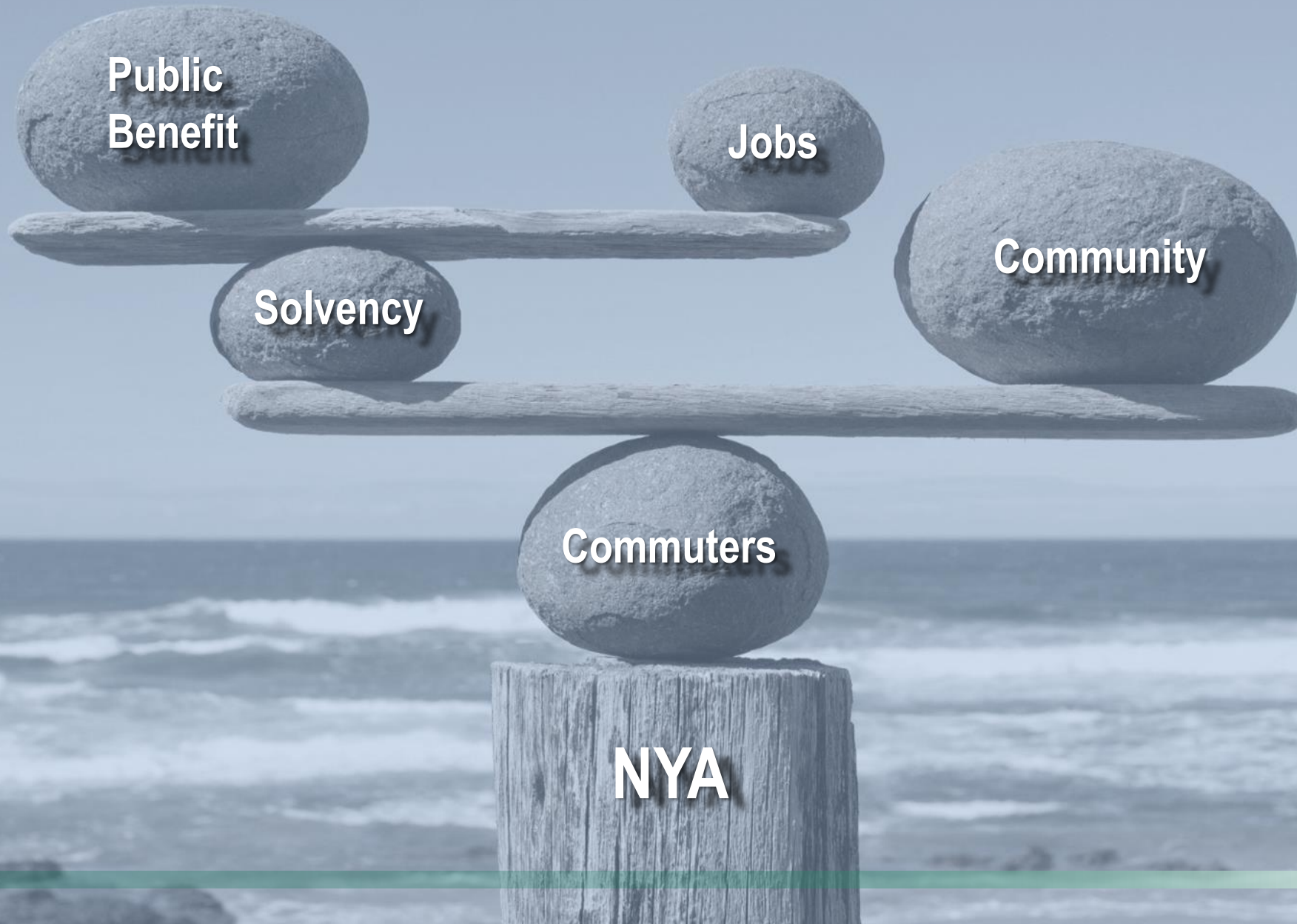


New York & Atlantic Railway Information

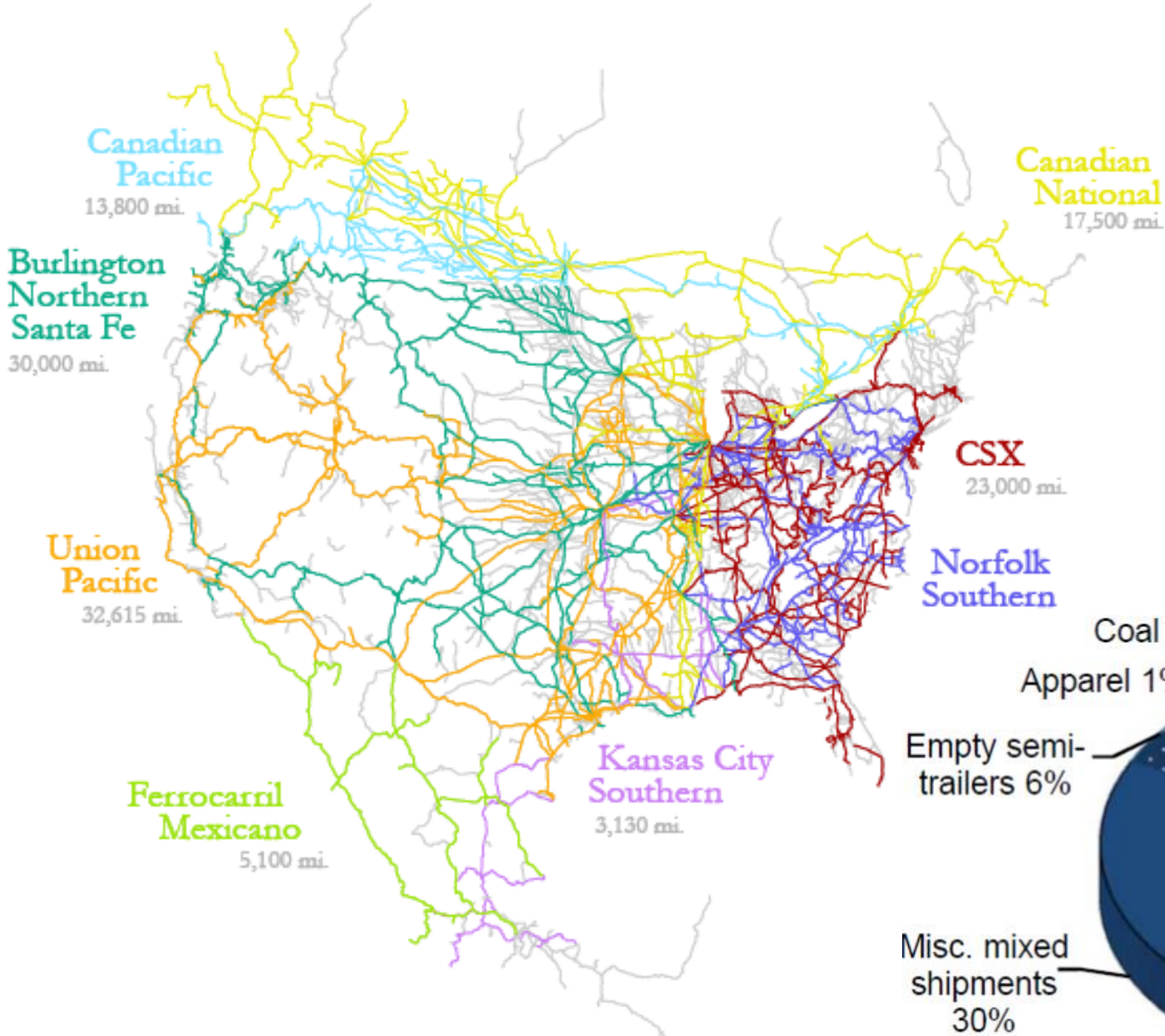
- Formed in 1996
- Earned the right to operate LIRR's freight license through a competitive bid process
- Tasked with increasing freight rail share
- 80+ customers
- Broad commodity mix
- Complex operating environment



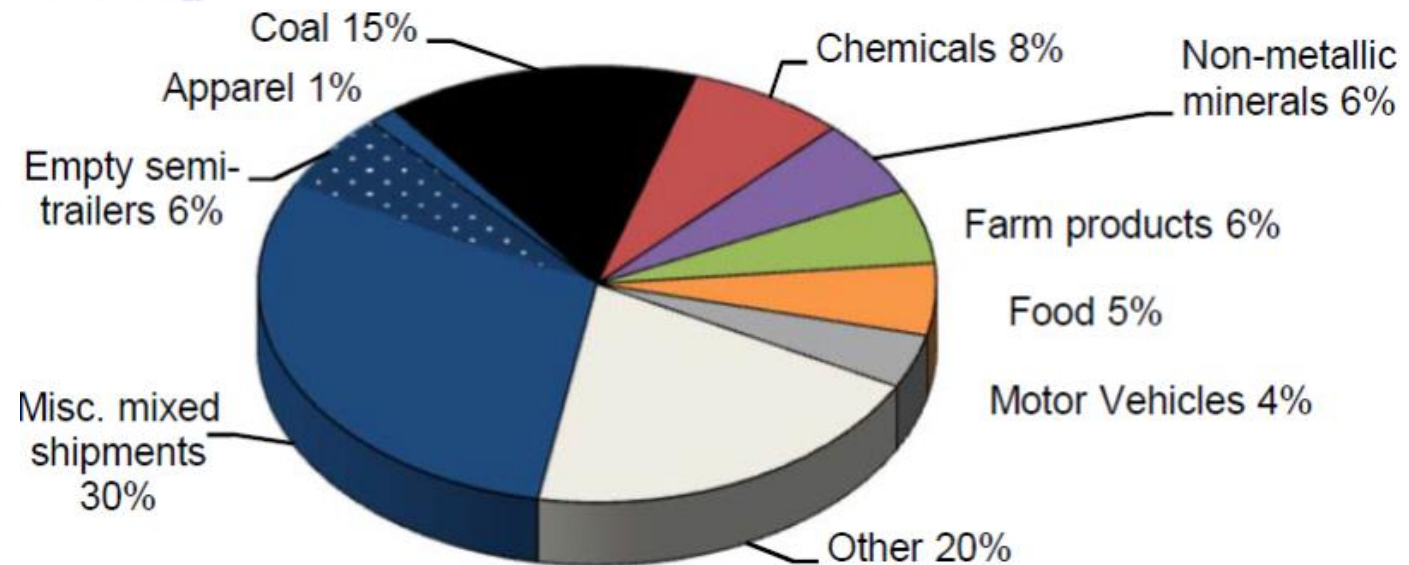
Balance



Far reaching network, diverse products



Carloads Originated 2018 –
All US Railroads Combined





Network connections



NYA interconnects to the National Rail Network through six railroads:

- Conrail
- CSX
- Canadian Pacific
- Norfolk Southern
- NYNJ Railroad
- Providence & Worcester

NYA provides a National Rail Network connection to one railroad:

- Brookhaven Rail Terminal



Hell Gate Bridge

- Majority of NYA inbound and outbound traffic moves over this critical connection
- All traffic must traverse Metro North and Amtrak owned lines
- CSX traffic flows to and from Selkirk, NY
- P&W traffic flows from New Haven, CT
- Critical to preserve current capacity

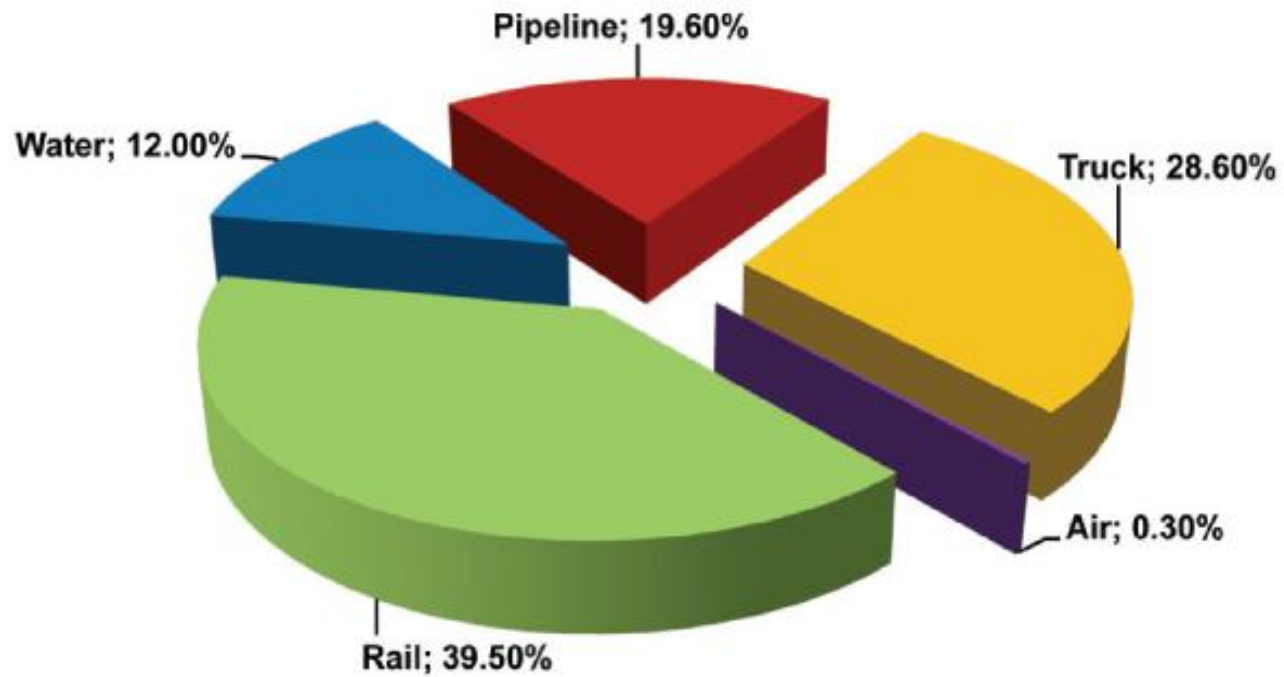
New York New Jersey Rail, LLC

A Shortcut to (and from) 8 Million People

- Connects through Conrail to Norfolk Southern and CSX networks
- Wholly owned by PANYNJ
- Extensive investments made recently to improve reliability and increase capacity
- Vital connection for competitive access and network redundancy

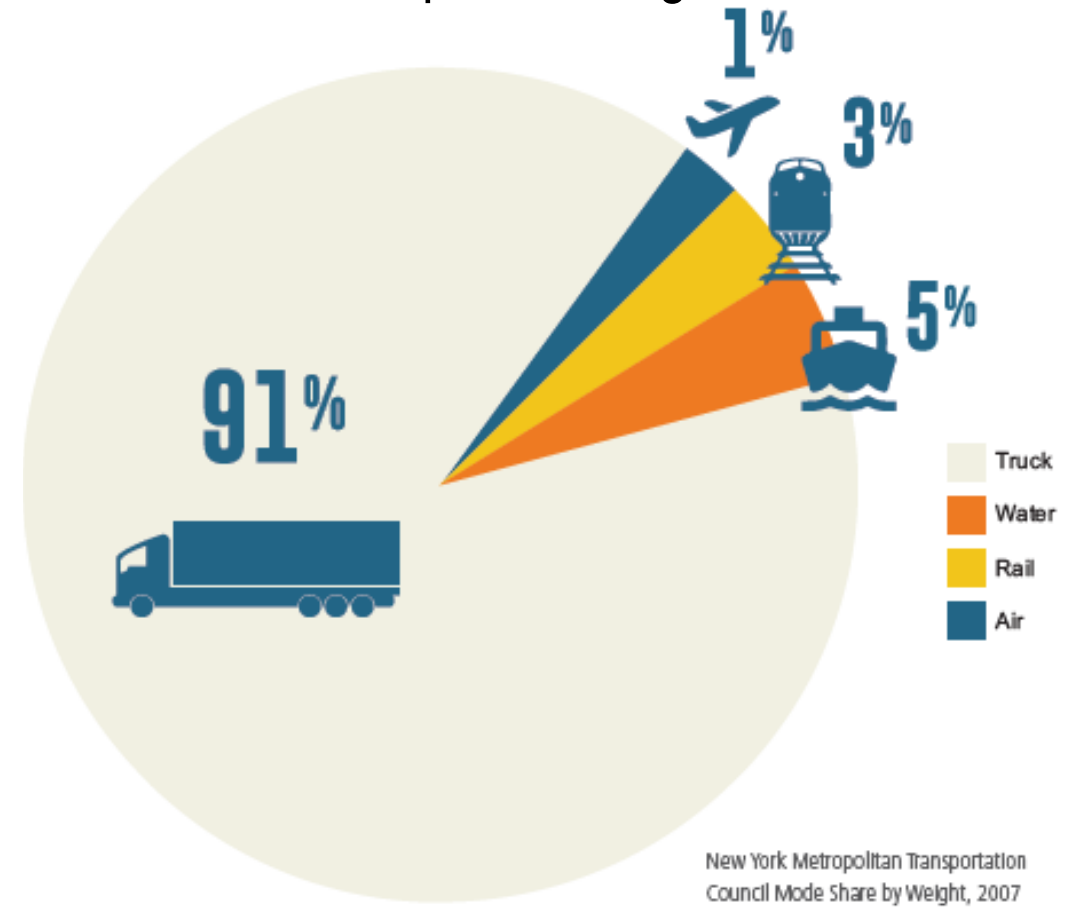
Modal Share

National



Federal Railroad Administration,
"National Rail Plan Progress Report", September 2010.

NYC Metropolitan Region

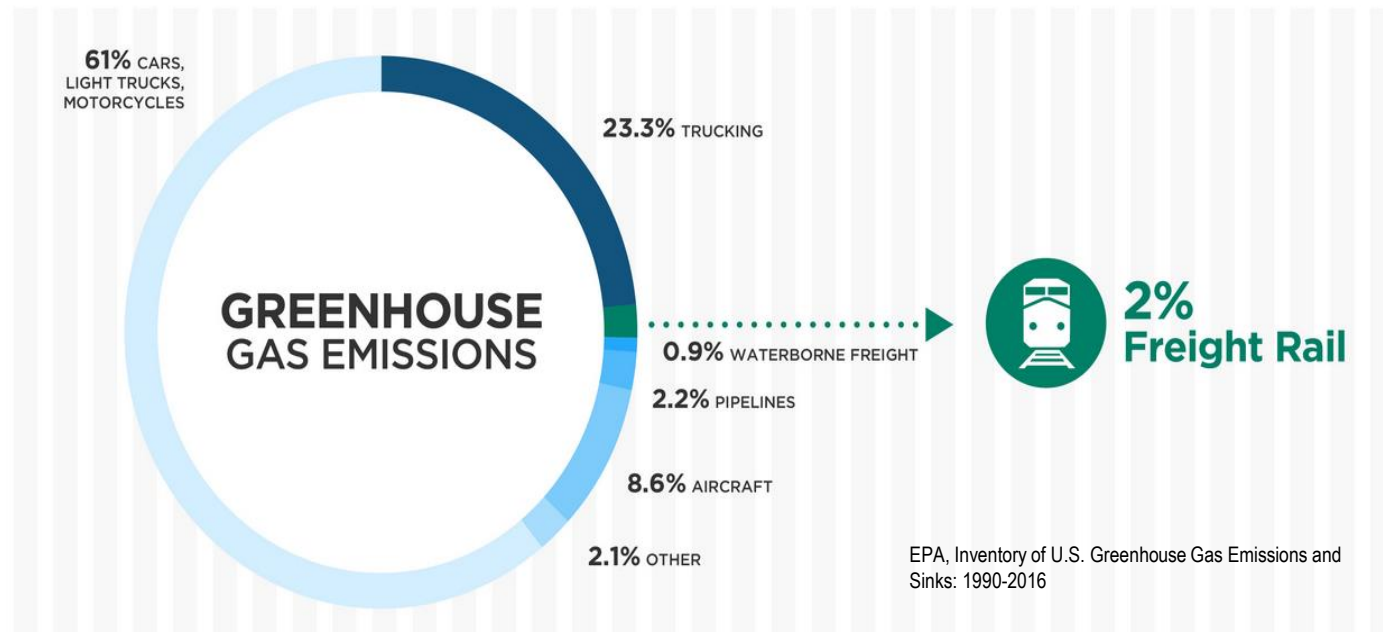


New York Metropolitan Transportation
Council Mode Share by Weight, 2007

Carbon conscious

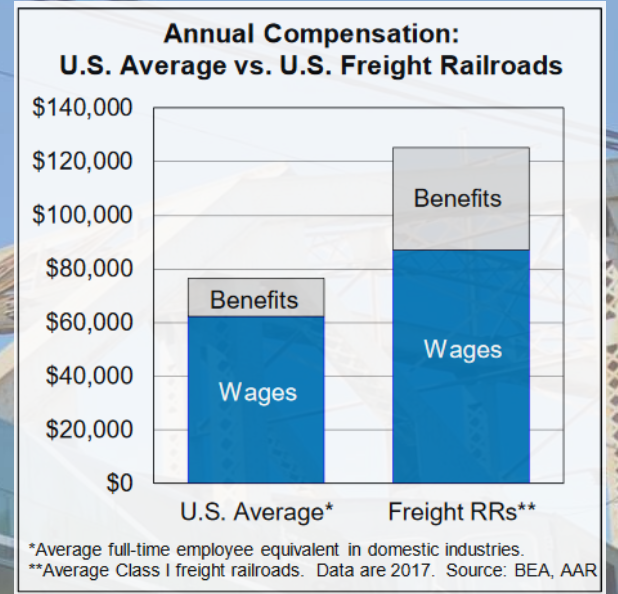


- Anticipating NYS / LIRR procurement of low emission units
- Lower carbon footprint vs other transportation modes
- One freight train is equivalent to hundreds fewer trucks on our roadways
- Rail moves 1/3 of export and 1/3 of intercity volume, yet accounts for only ~2% of emissions*
- One ton of freight : 470 miles : one gallon of fuel*
- Moving 5% more freight from truck to rail would result in 9 million fewer tons of greenhouse gas emissions*



*American Association of Railroads, 2019

Personnel

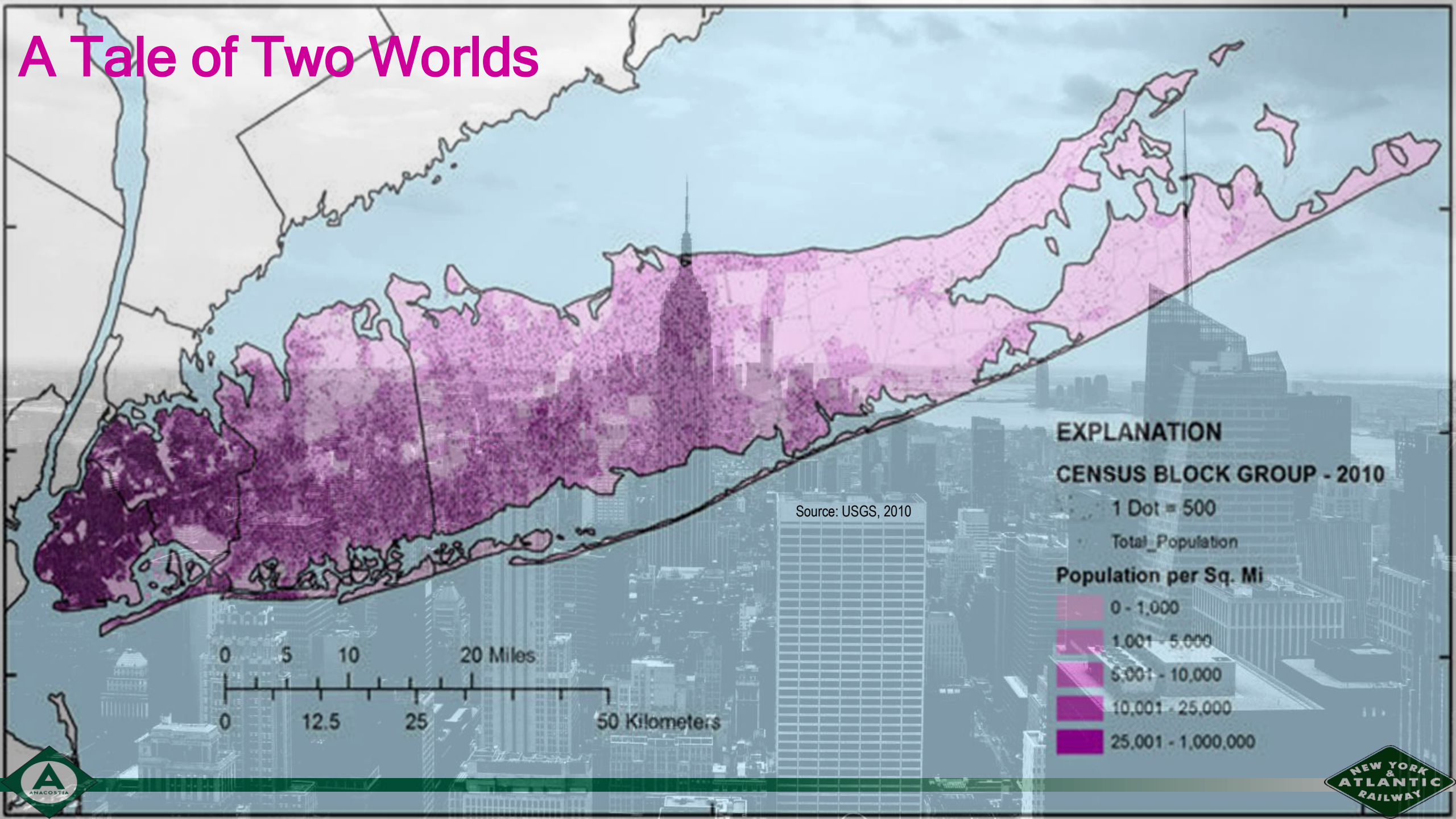


Every railroad job supported another



jobs across the U.S. economy in 2014.

[Source: Towson University's Regional Economic Studies Institute]



Freight rail matters



New York City, NY



United States, North America

40th

Most Congested City in the World

4th in United States

133

Driving time spent
in congestion in
2018

9

Inner city last mile
speed (mph)

\$1,859

Cost of congestion
per driver

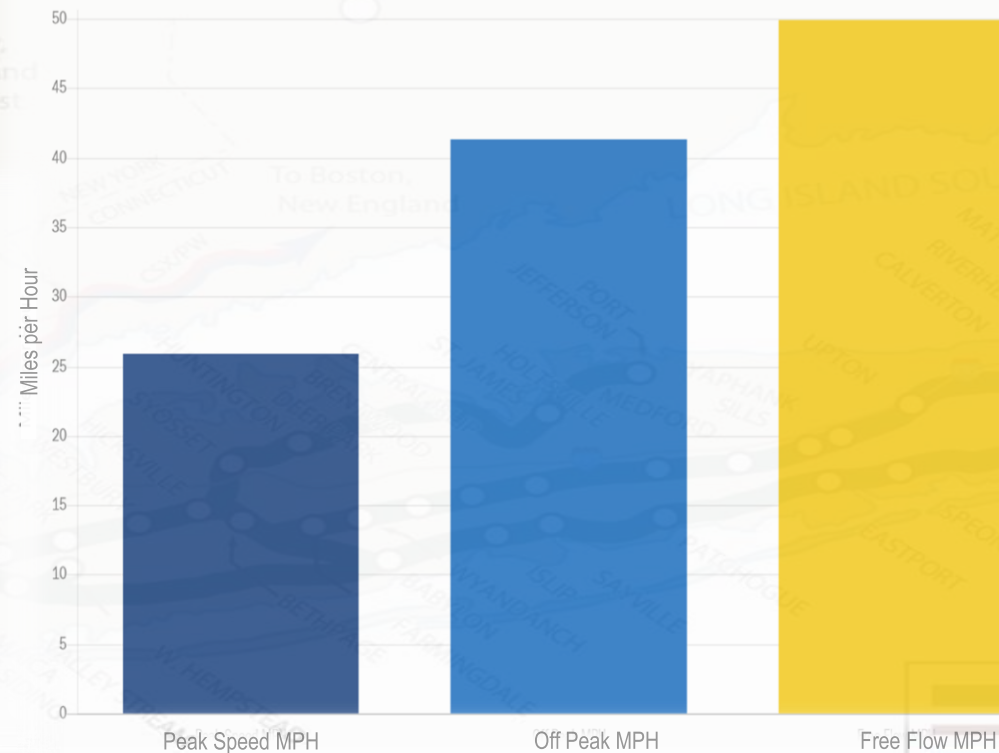
To Albany,
Chicago and
Points west

To Schenectady

To Boston,
New England

To Philadelphia,
Chicago and
Points south

Time of Day Travel Speeds



Inrix Global Traffic Scorecard, 2018

Freight Rail's Private Spending



Supported about
1.5 million jobs



Generated nearly
\$33 billion in taxes



Created an almost
\$274 billion economic impact



aar.org/report-2

Source: 2014 Economic and Fiscal Impact Analysis of Class I Railroads, Towson University/REI

NEW YORK NEW JERSEY RAIL
NORFOLK SOUTHERN
PROVIDENCE & WORCESTER
INTERCHANGE

