

WELCOME TO

NYMTC-Notes!

www.NYMTC.org

VOLUME 11, #11

November 12, 2008

- * TOD Conference This Week Nov 14
- * GIS at Brown Bag Nov 19
- * PFAC on Nov 20
- * ACT Conference Nov 24-25
- * Can Parking Management Help?
- * Updated TIP Listings and Maps
- * DATA CORNER: Travel Up-Vehicle Usage Down
- * CALENDAR OF EVENTS *



* TOD Conference This Week- November 14 by Lisa Daglian

Join us on November 14 at New York University (NYU) for *Making the Connection: Transit Oriented Development (TOD)- A Blueprint for Success* conference, sponsored by NYMTC and the NYU Rudin Center. Register online at <http://wagner.nyu.edu/rudincenter/conferences/TOD.php>. Transit Oriented Development takes on particular importance as communities increasingly look to reduce congestion and their carbon footprint. This symposium will explore opportunities, challenges and policy questions. Speakers will provide regional, national, and international examples about what works and what does not work. Contact: Lisa Daglian at 212.383.7241 or LDaglian@dot.state.ny.us.

A vertical poster for the conference. At the top, it says 'MAKING the CONNECTION: TRANSIT ORIENTED DEVELOPMENT - A BLUEPRINT FOR SUCCESS'. Below that, it lists the NYU Wagner Rudin Center for Transportation Policy & Management and the NYMTC logo. It also lists sponsors: sponsored by NYU Wagner Rudin Center for Transportation Policy & Management, New York Metropolitan Transportation Council, and Langan Engineering & Environmental Services, The Louis Berger Group, Sam Schwartz Engineering, and Turner Construction Company. The date and time are 'FRIDAY, NOVEMBER 14, 2008 8:30AM - 1:00PM'. The location is 'KIMMEL CENTER EISNER & LUBIN AUDITORIUM NEW YORK UNIVERSITY 60 WASHINGTON SQ. SOUTH NEW YORK, NY 10003'. At the bottom, it says 'further information available at: http://wagner.nyu.edu/rudincenter'.

* GIS at Brown Bag November 19 by Gerry Bogacz

Recent research and development of the use of Geographic Information Sciences (GIS) in the field of transportation and logistics will be the topic of the next NYMTC Brown Bag presentation on November 19 (see Calendar of Events). Fan Yang, Assistant Professor of Civil Engineering at City College of New York, will explore some recent research and development in this area. He will focus on applications such as the traveler information system, urban transportation planning, fleet management, and emergency management. The Brown Bag session will be webcast live and the webcast will be archived for future viewing (see www.NYMTC.org).

Contact: Gerry Bogacz at 212.383.7260 or GBogacz@dot.state.ny.us.

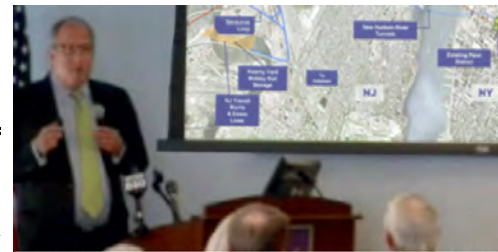


Fan Yang

*** PFAC on November 20** by Alan Borenstein

NYMTC's Program, Finance and Administration Committee (PFAC) will meet on November 20 at 1:15 pm. The agenda will soon be available on www.NYMTC.org.

Contact: Andrea Miles-Cole at 718.482.4551 or AMiles-Cole@dot.state.ny.us.



PANY&NJ'S Chris Ward at September PFAC

*** ACT Conference November 24-25** by Rob Henry, ACT Chapter President

The Mid-Atlantic Chapter of the Association for Commuter Transportation (ACT), comprised of Delaware, Pennsylvania, New York, New Jersey and Connecticut, will be convening a symposium, *Transportation Crossroads. Investing in New Directions*, to discuss the upcoming transportation funding authorization and offer constructive suggestions for its development. This event is to take place at the Park Central Hotel in New York City on November 24 and 25, 2008. Transportation officials from the national, state and local levels and a number of transportation planning professionals will be on hand to probe existing transportation issues in our region and discuss the forthcoming transportation legislation and its impact on the national, regional and local levels as well seek to guide the planning discussion over the next forty years.

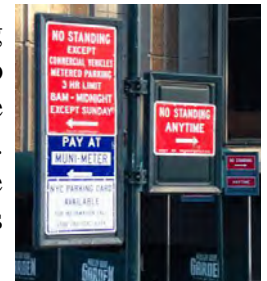
Contact: Rob Henry at 610.354.8899 or rhenry@gvftma.com, www.midatlanticchapter.com.



*** Can Parking Management Help?** by Jan Khan

Parking is an important component of the transportation network, and effective parking management can certainly lead to economic, social, and environmental benefits to communities. When the Metropolitan Mobility Network meets on December 2 (see Calendar of Events for details) parking will be one of the major topics of discussion. Network members (consisting of TDM practitioners from across the region) will also be discussing NY 511 (the traveler information service for New York State) and the results of the 2008 Regional Commuter Choice awards.

Contact: Jan Khan at 212.383.7251 or JKhan@dot.state.ny.us.

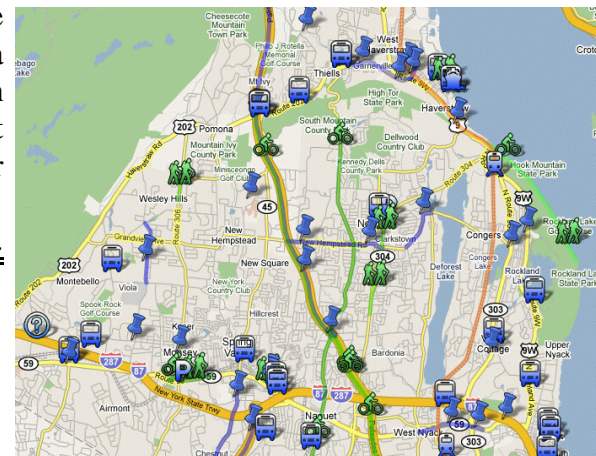


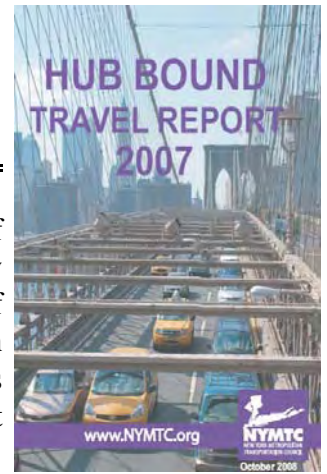
*** Updated TIP Listings and Maps** by Chris Hardej

The Transportation Improvement Program (TIP) is continuously amended and modified to keep pace with project or program changes. The TIP pages on the NYMTC website, www.NYMTC.org/abouttip.cfm, have been updated to include project listings (by county) and maps to show changes through October 2008. The maps are in Google Maps and Google Earth formats.

The TIP is the five-year program of transportation improvements which is a requirement for federal funding. Although only federally-funded projects are required to be on the TIP, some locally-funded projects are shown to give a more comprehensive view. Many projects are also area-wide, therefore only those that have defined locations are displayed on the maps. Once you locate a project of interest on the map, you can access project information by clicking on the line or place marker. Once you know the Project Identification Number (PIN), you can reference the TIP listings for greater information on that project.

Contact: Chris Hardej at 212.383.7253 or CHardej@dot.state.ny.us.





*** DATA CORNER: Travel Up-Vehicle Usage Down** by Adam Schildge

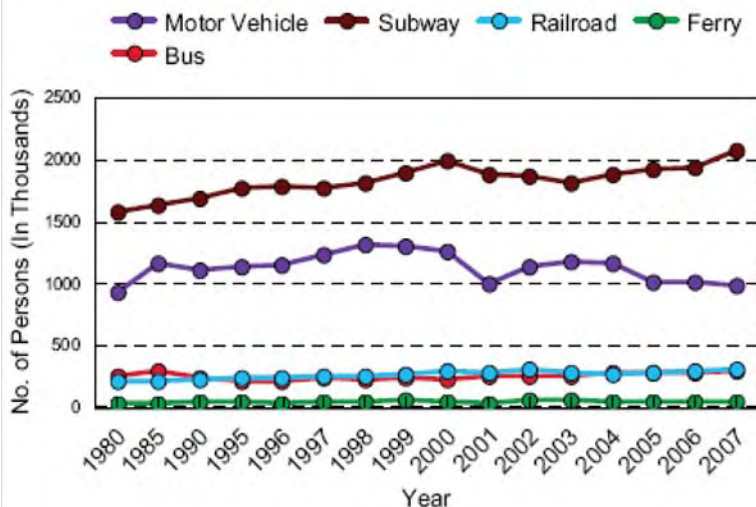
According to data provided by NYMTC’s member agencies, the total number of persons entering the area of Manhattan below 60th Street on a single fall business day has increased by 3.6% since 2006. This total number includes all modes of transportation except walking, and reached 3.73 million people entering this area in 2007. This is the third highest figure ever, falling only beneath the record figures reached in 2000 and 1999. Notably, 2007 also sits right above the fourth-highest entries recorded in 1948, 3.69 million.

At the same time that persons entering the Hub have increased to a near record, the number of private vehicles fell to the second lowest figure since 1996, following even lower vehicle counts taken in October 2001. As a result of the increase in travel and decrease in vehicle usage, the share of persons taking private vehicles into the Hub dropped by 1.6% to 26.6% in 2007. The overall increase in travelers was instead borne by subway, bus, and commuter rail. These public transit modes saw increases of 2.5%, 6.8%, and 2.0% respectively.

This detailed single-day study has been compiled regularly since 1932 and annually since 1978. Reports prior to 1984 were compiled by NYMTC’s predecessor, the Tri-State Regional Planning Commission. The report provides detailed hourly inbound and outbound passenger and vehicle counts by line, location, and mode. The data for the report has been obtained by member and affiliated agencies, including four separate operating units of the Metropolitan Transportation Authority, the New York City Department of Transportation, the Port Authority of New York & New Jersey, New Jersey Transit, Amtrak, and others.

The complete report, with detailed source tables, analytical breakdowns, and textual and graphical analysis is available on NYMTC’s website at www.NYMTC.org/data_services/HBT.html. Contact: Adam Schildge at 212.383.7267 or ASchildge@dot.state.ny.us.

PERSONS ENTERING THE HUB BY MODE AND YEAR



Bicycle data prior to year 1997 is not available.

*** CALENDAR OF EVENTS ***

11/13/08, 8:30am-7pm, 2008 Waterfront Conference, Launching the Waterfront Action Agenda, National Museum of the American Indian, One Bowling Green, NYC.
waterfrontalliance.org/~waterfr1/?q=content/2008-waterfront-conference.

11/14/08, 8am, Making the Connection: Transit Oriented Development, NYU Kimmel Center. <http://wagner.nyu.edu/rudincenter/conferences/TOD.php>.

11/19/08, 12pm, NYMTC Brown Bag- GIS, Fan Yang (webcast). NYMTC, 199 Water Street, 22nd Floor, NYC. Gretchen Riederer, 212.383.7258, GRiederer@dot.state.ny.us.

11/20/08, 1:15pm, NYMTC Program, Finance and Administration Committee (PFAC) Meeting (webcast). 199 Water St., NYC. Andrea Miles-Cole, 718.482.4551, AMiles-Cole@dot.state.ny.us.

11/24-11/25/08, ACT- Transportation Crossroads Regional Conference.
Park Central Hotel, 870 7th Avenue, NYC. www.midatlanticchapter.com.

12/2/08, 10:30 am, Metropolitan Mobility Network Meeting (webcast), NYMTC, 22nd Floor, 199 Water Street, NY, NY 10038. Jan Khan, 212.383.7251, JKhan@dot.state.ny.us.

12/05/08, 10am, Mid-Hudson South Mobility Advisory Forum meeting, 511- A Travel Information Service for New York. Westchester County Center, 198 Central Avenue, White Plains, NY. Naomi Klein, 914.813.7758, nkk3@westchestergov.com.



NYMTC is the Metropolitan Planning Organization for New York City and the counties of Nassau, Putnam, Rockland, Suffolk, and Westchester.

NYMTC-Notes, issued every other Wednesday, contains announcements, short articles and calendar. Email: NYMTC-Notes@dot.state.ny.us for questions and comments. Email: NYMTC-Notes@dot.state.ny.us with **REMOVE** or **ADD** as the subject to unsubscribe or subscribe.

The New York Metropolitan Transportation Council is located at:
199 Water Street, 22nd Floor, New York, NY 10038 Phone:
212.383.7200

Editor: Bernice Hoffner

Senior Editor: Alan Borenstein