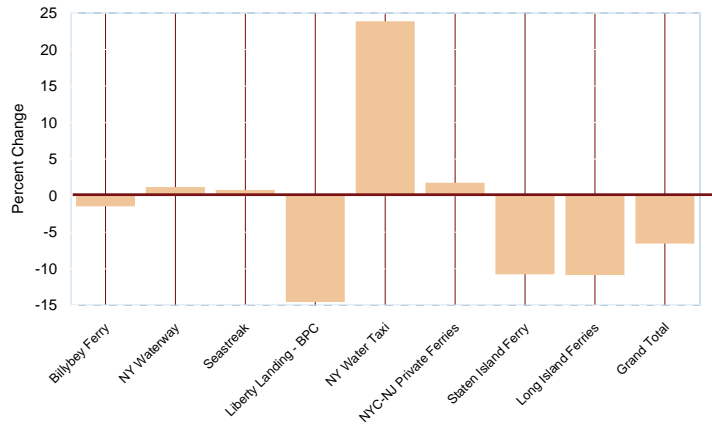


**AVERAGE WEEKDAY FERRY RIDERSHIP
by Ferry Operator
Third 2006/Third 2005 Quarters - Percent Change**



Sources: Port Authority of New York & New Jersey, NYC DOT, Private Operators

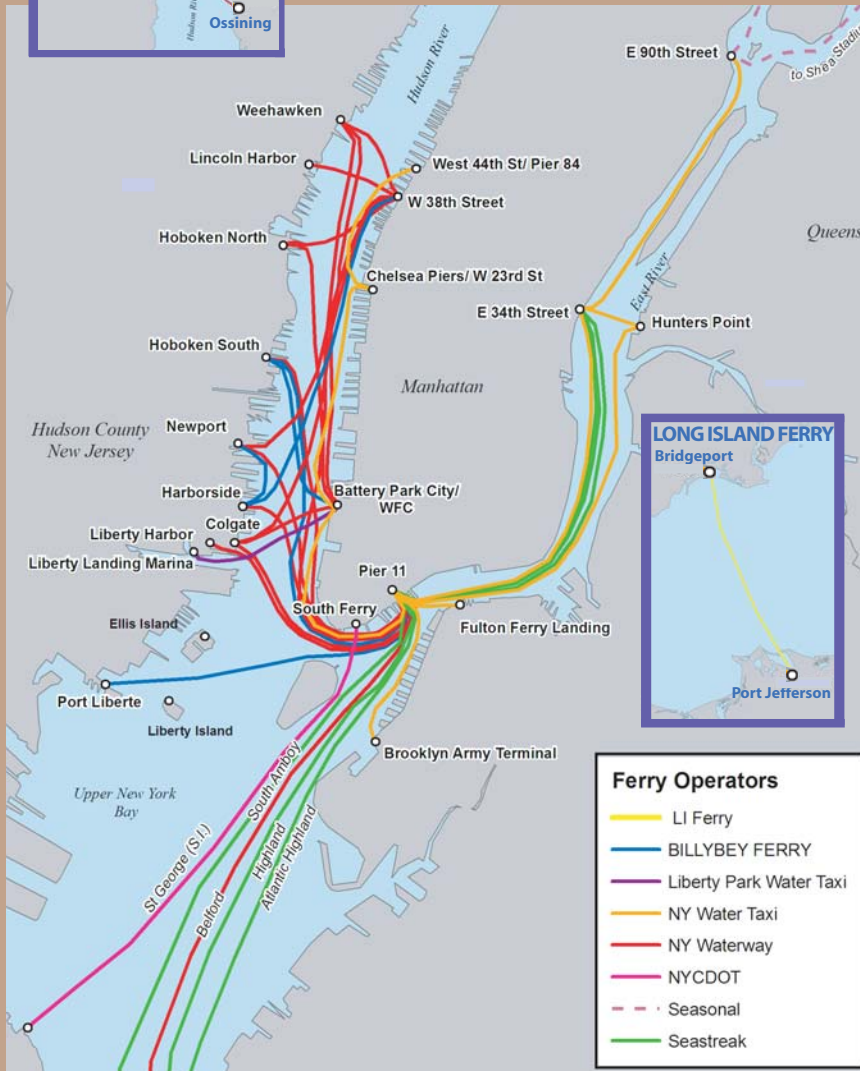
**MONTHLY COMPARISON
OF AVERAGE WEEKDAY RIDERSHIP**

Ferry	2006			Avg. 3rd Qtr	3rd-06/ 3rd-05 Qtrs % change
	July	Aug.	Sept.		
BILLYBEY FERRY					
Hoboken- Pier 11	4,381	4,573	4,942	4,632	-5.8
Port Liberte-Pier 11	569	532	538	546	13.6
Liberty Harbor-Pier 11	917	853	880	883	-8.9
Hoboken-BPC	4,018	3,826	4,132	3,992	4.3
Total Billybey	9,885	9,784	10,492	10,054	-1.4
NY WATERWAY					
Weehawken - Pier 11	1,243	1,173	1,219	1,212	-12.6
Belford to Pier 11	2,259	2,198	2,324	2,260	13.8
Total Pier 11	3,502	3,371	3,543	3,472	2.9
Colgate -BPC	2,469	2,346	2,362	2,392	4.8
Hoboken North - Weehawken - BPC	528	581	739	616	-22.1
Total BPC	2,997	2,927	3,101	3,008	-2.1
Hoboken North - Pier 79	2,016	1,839	1,785	1,880	6.0
Lincoln Harbor-Pier 79	3,080	2,992	2,985	3,019	14.7
Weehawken - Pier 79	6,506	6,320	6,111	6,312	-10.5
Colgate - Pier 79	515	493	468	492	3.6
Total Pier 79 (West 39th Street)	12,117	11,644	11,349	11,703	-1.9
Haverstraw - Ossining	512	500	524	512	19.3
Newburgh - Beacon	326	300	332	319	n/a
Total NY Waterway	19,454	18,742	18,849	19,015	1.1
SEASTREAK					
Highlands-Pier 11, E34th St.	2,229	2,156	1,919	2,101	-0.0
Atlantic Highlands-Pier 11, E34th St.	1,396	1,316	1,183	1,298	0.3
Total Seastreak	3,626	3,472	3,102	3,400	0.1
LIBERTY PARK WATER TAXI					
Liberty Landing - BPC	690	651	573	638	-14.5
NEW YORK WATER TAXI					
Brooklyn Army Terminal - Pier 11	247	266	274	262	-12.8
Colgate - Pier 11	2,339	2,261	2,203	2,268	6.5
Queens-E 34th-Pier 11	238	345	220	268	7.1
East River - Midday Service	543	580	443	522	n/a
Total NY Water Taxi	3,367	3,452	3,140	3,320	23.8
TOTAL private ferry Average Weekday	37,022	36,101	36,156	36,426	1.7
Staten Island Ferry	56,492	59,598	59,357	58,482	-10.7
LONG ISLAND FERRIES					
Bridgeport-Port Jefferson Steamboat Co.	4,334	5,186	3,899	4,473	-10.8
GRAND TOTAL	97,848	100,885	99,412	99,381	-6.5

Pier 79 was formerly listed as West 34th Street.
Note: Data for Long Island Cross Sound Ferry (New London to Orient Pt.) is not available.

The New York Metropolitan Transportation Council (NYMTC), an association of governments and transportation providers, is pleased to release the third Quarter 2006 brochure: **Travel Patterns in the New York Metropolitan Area**. This statistical information will be updated and made public on a regular basis, and is designed to provide a glance at changing regional travel patterns.

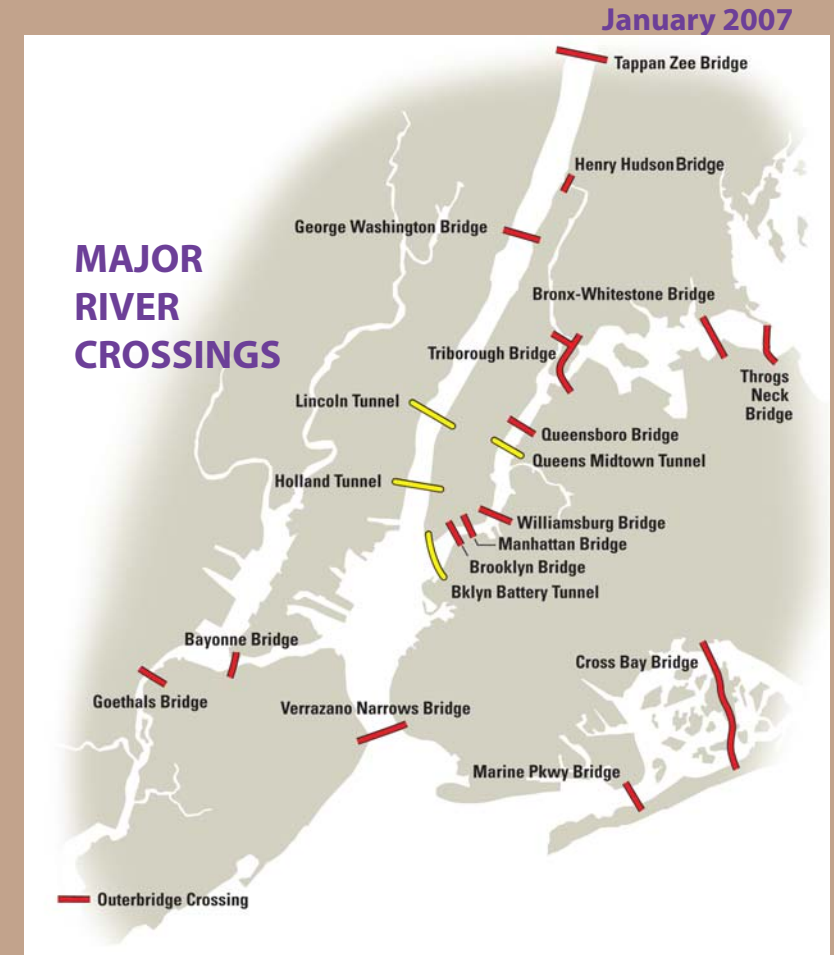
The data were collected from the agencies responsible for operating each facility. In using these data it is important to keep in mind that regional travel patterns can change for a variety of reasons, such as economic changes, service disruptions, construction, weather conditions, or seasonal travel variations. It is difficult to isolate the exact reasons for the changing patterns, so these data should be used with caution.



TRAVEL PATTERNS

In the New York Metropolitan Area

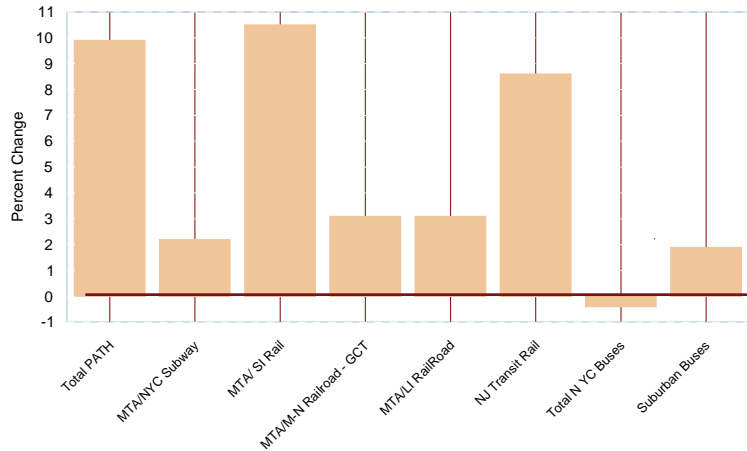
THIRD QUARTER 2006



NYMTC
New York Metropolitan
Transportation Council

www.nymtc.org

AVERAGE WEEKDAY BUS AND RAIL RIDERSHIP by Operator
Third 2006/Third 2005 Quarters - Percent Change

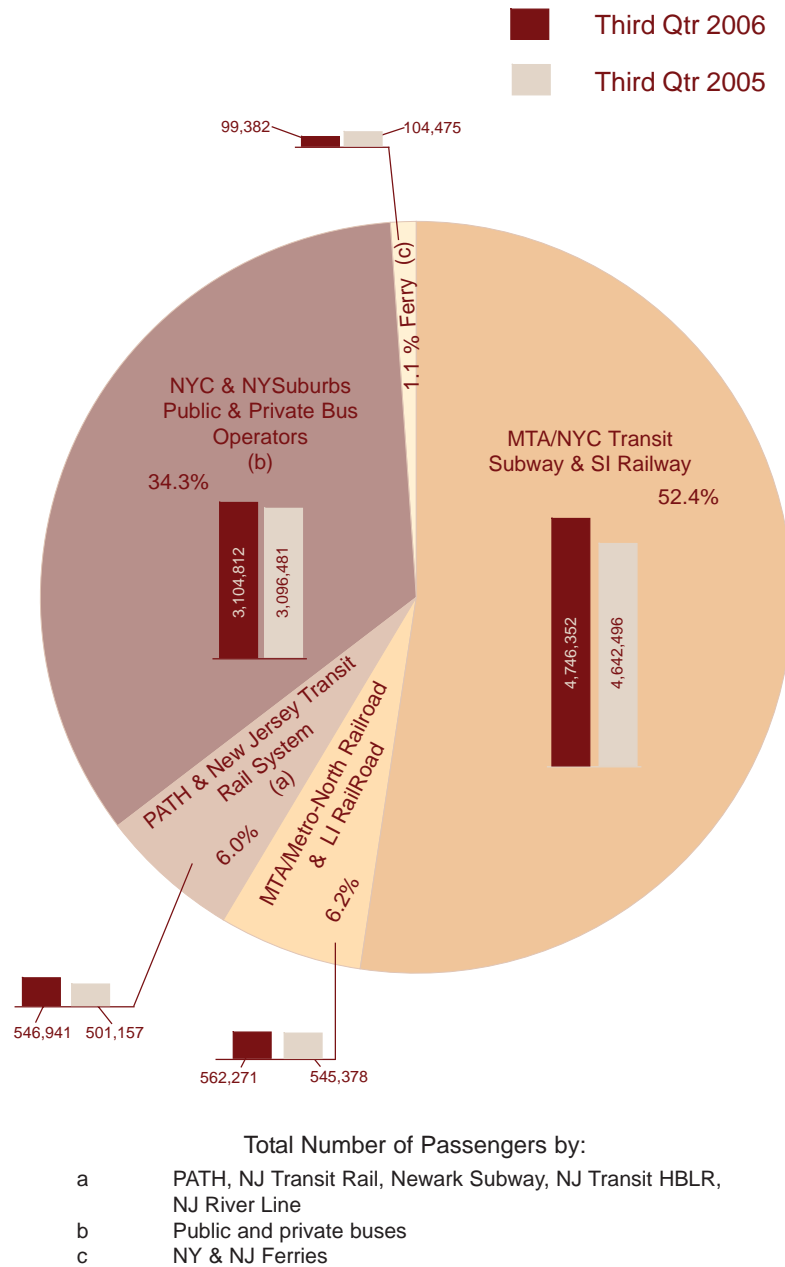


MONTHLY COMPARISON OF AVERAGE WEEKDAY RIDERSHIP

Bus and Rail	2006				3rd06/ 3rd-05 Qtrs % change
	July	Aug.	Sept.	Avg. 3rd Qtr	
PORT AUTHORITY TRANS-HUDSON RAIL					
PATH-New York Stations	97,691	97,786	99,533	98,337	5.9
PATH-New Jersey Stations	127,481	127,455	133,726	129,554	13.1
PATH Total	225,172	225,241	233,259	227,891	9.9
NEW YORK TRANSIT RAIL SYSTEM					
MTA/NYC Transit Subway	4,635,403	4,489,513	5,075,618	4,733,511	2.2
MTA/Staten Island Railway	11,822	11,195	15,504	12,840	10.5
MTA/Metro-North Railroad-Total GCT	266,534	259,377	270,337	265,416	3.1
MTA/ LI Rail Road	302,580	287,215	300,769	296,855	3.1
MTA (a) RAIL Total	5,216,339	5,047,300	5,662,228	5,308,622	2.3
NEW JERSEY TRANSIT RAIL SYSTEM					
New Jersey Transit Rail	^	^	^	262,350	6.9
Newark Subway	**	^	^	17,350	0.6
New Jersey Transit HBLR	***	^	^	31,750	35.7
River Line	^	^	^	7,600	-0.7
NJ Total				319,050	8.6
NEW YORK CITY BUSES					
MTA/NYC Transit Bus	2,230,473	2,140,743	2,533,938	2,301,718	-0.3
Atlantic Express	2,684	3,137	2,885	2,902	2.4
Total NYC Buses	2,233,157	2,143,880	2,536,823	2,304,620	-0.3
SUBURBAN BUSES					
New Jersey Transit Bus	^	^	^	535,400	0.8
MTA/Long Island Bus	107,386	106,786	115,678	109,950	1.3
Westchester County Bee-Line Bus	92,431	89,775	104,906	95,704	3.0
Orange County Buses	^	^	^	3,178	-7.2
Putnam County Buses	647	683	598	643	-9.5
Rockland County Buses	^	^	^	28,915	34.9
HART (b)	883	897	867	882	-6.8
Dutchess County Buses	2,156	2,289	2,182	2,209	-6.0
City of Long Beach	1,349	1,219	1,163	1,244	11.7
Suffolk County Buses	23,746	25,295	25,752	24,931	8.1
Total Suburb Buses				803,956	2.2
Grand Total				8,963,239	2.0

Sources: Port Authority of New York & New Jersey, Metropolitan Transportation Authority, New Jersey Transit Corp., NYS Department of Transportation, New York City Department of Transportation, Westchester County Department of Transportation, other counties' bus operators.
 (a) MTA - Metropolitan Transportation Authority (b) HART - Huntington Area Rapid Transit
 * - Grand Central Terminal ** - Subway data was formerly added to HBLR
 *** - Hudson Bergen Light Rail System.
 ^ - Only quarterly data available ^^ - Local and Express buses
 ^^ - Suffolk County includes data of local and pass-through buses
 Note: MTA and NJ Transit data are revenue based. PATH and NYC Private Bus data indicate total counts.

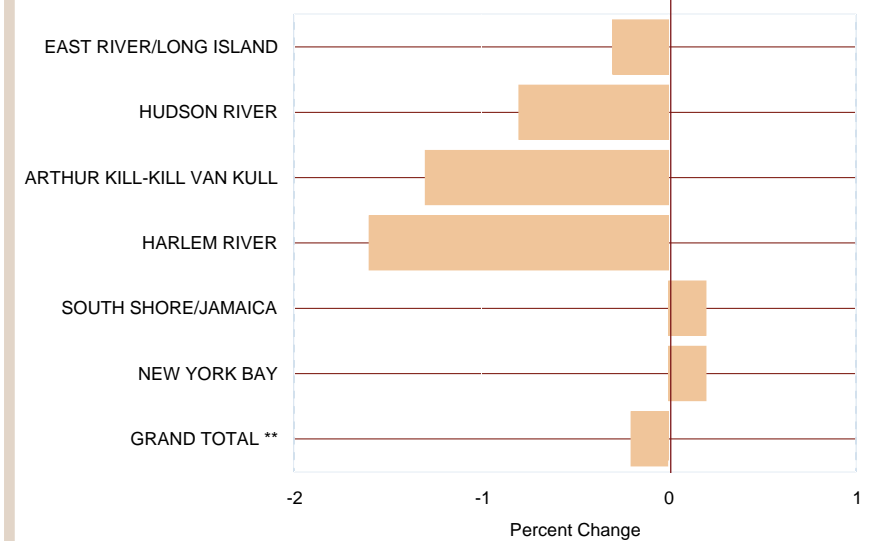
THIRD QUARTER 2006 AVERAGE WEEKDAY PASSENGERS BY PUBLIC TRANSPORTATION



Total Number of Passengers by:

- a PATH, NJ Transit Rail, Newark Subway, NJ Transit HBLR, NJ River Line
- b Public and private buses
- c NY & NJ Ferries

VEHICULAR TRAFFIC for MAJOR RIVER CROSSINGS by River
Third 2006/Third 2005 Quarters - Percent Change



** Total excludes NYC DOT East River bridges, data not available

MAJOR VEHICULAR RIVER CROSSINGS
Monthly Comparison of Average Weekday Traffic *
2006

		July	Aug.	Sept.	3rd Qtr	Avg. 3rd Qtr	3rd-06/ 3rd-05 Qtrs % change
EAST RIVER/LONG ISLAND SOUND CROSSINGS **							
Queens-Midtown Tunnel	MTA B&T ^	84,366	84,455	85,173	84,665	0.5	
Brooklyn-Battery Tunnel	MTA B&T	51,572	53,067	53,741	52,793	1.6	
Triborough Bridge-Bronx Plaza	MTA B&T	86,849	86,364	83,810	85,674	-2.0	
Triborough Bridge-Manhattan Plaza	MTA B&T	94,867	95,601	98,344	96,271	1.1	
Bronx-Whitestone Bridge	MTA B&T	106,360	108,708	106,887	107,318	-4.3	
Throgs Neck Bridge	MTA B&T	129,195	129,698	123,901	127,598	2.1	
Total (without NYC DOT East River Bridges)		553,209	557,893	551,856	554,319	-0.3	
HUDSON RIVER CROSSINGS							
George Washington Bridge	PANY&NJ ^^	306,672	310,407	299,661	305,580	-1.2	
Lincoln Tunnel	PANY&NJ	118,147	122,559	122,164	120,957	-0.9	
Holland Tunnel	PANY&NJ	95,734	97,561	95,731	96,342	0.7	
Tappan-Zee Bridge	NYS TA ***	145,574	149,589	144,341	146,501	-1.0	
Bear Mountain Bridge	NYSBA ***	19,052	19,477	18,403	18,977	-0.3	
Total		685,179	699,593	680,300	688,357	-0.8	
ARTHUR KILL-KILL VAN KULL CROSSINGS							
Bayonne Bridge	PANY&NJ	23,560	24,775	23,916	24,084	0.6	
Goethals Bridge	PANY&NJ	73,207	71,837	69,764	71,603	-9.5	
Outerbridge Crossing	PANY&NJ	94,325	97,673	89,851	93,950	5.4	
Total		191,092	194,285	183,531	189,636	-1.3	
HARLEM RIVER CROSSINGS							
Henry Hudson Bridge	MTA B&T	67,662	67,766	71,492	68,973	-1.6	
SOUTH SHORE/JAMAICA BAY CROSSINGS							
Marine Parkway Bridge ^	MTA B&T	26,059	25,146	22,609	24,605	0.7	
Cross Bay Bridge	MTA B&T	22,905	21,942	21,534	22,127	1.7	
Atlantic Beach Bridge	NCBA ^^	37,583	36,568	28,307	34,153	-1.0	
Total		86,547	83,656	72,450	80,884	0.2	
NEW YORK BAY CROSSINGS							
Verrazano-Narrows Bridge	MTA B&T	199,359	201,072	198,161	199,531	0.1	
Grand Total (w/o East River bridges)		1,783,048	1,804,265	1,757,790	1,781,701	-0.6	

* Data indicate two-way traffic
 ** Excludes NYC DOT East River bridges (The data are available only annually and listed in the 4th Quarter of this brochure)
 *** NSTA - New York State Thruway Authority, NYSBA - New York State Bridge Authority
 ^ MTA B&T - Metropolitan Transportation Authority Bridges & Tunnels
 ^^ PANY&NJ - Port Authority of New York and New Jersey
 ^^ NCBA - Nassau County Bridge Authority