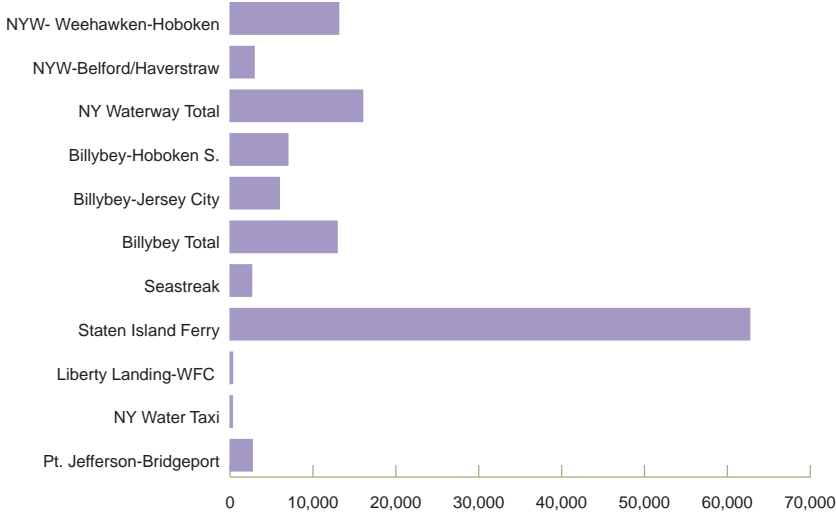


Average Weekday Ferry Ridership

by Ferry Operator
Q1 2008



Average Weekday Ferry Ridership

	Q1 2008			Avg. Q1	Q1 2007/ Q1 2008 % change
	Jan.	Feb.	Mar.		

Billybey Ferry					
Hoboken South					
Hoboken - Pier 11	4,027	3,715	3,603	3,782	8.1
Hoboken - World Financial Center	3,372	3,139	3,063	3,191	(5.9)
Total	7,399	6,854	6,666	6,973	1.2
Jersey City					
Paulus Hook - Pier 79 (West 39th St.) (2)	312	300	349	320	8.6
Newport - Pier 79 (West 39th St.)	257	236	179	224	36.6
Paulus Hook - World Financial Center (2)	1,779	1,681	1,706	1,722	(12.0)
Paulus Hook - Pier 11	2,463	2,430	2,353	2,415	5.7
Liberty Harbor - Pier 11	706	668	700	691	(22.8)
Port Liberte - Pier 11	587	543	564	565	(3.3)
Total	6,104	5,858	5,851	5,938	(3.9)
Billybey Total	13,503	12,712	12,517	12,911	(1.2)
NY Waterway					
Weehawken/Hoboken North					
Weehawken - Pier 79 (West 39th St.)	5,673	5,312	6,885	5,957	6.8
Weehawken - Hoboken North - WFC	779	829	729	779	5.8
Hoboken North - Pier 79 (West 39th St.)	1,794	1,725	1,826	1,782	8.2
Weehawken - Pier 11	1,283	1,304	1,254	1,280	8.8
Lincoln Harbor - Pier 79 (West 39th St.)	2,869	2,625	2,665	2,720	(9.5)
Edgewater - Pier 79 (West 39th St.) (1)	623	608	516	582	n/c
Total	13,021	12,403	13,875	13,100	4.9
Belford / Haverstraw / Newburgh					
Belford - Pier 11	2,123	1,982	1,857	1,987	(0.4)
Haverstraw - Ossining	508	492	489	496	36.7
Newburgh - Beacon	391	414	439	415	75.7
Total	3,022	2,888	2,785	2,898	11.7
NY Waterway Total	16,043	15,291	16,660	15,998	6.1
Seastreak					
Highlands-Pier 11, E34th St.	1,662	1,659	1,602	1,641	21.1
Atlantic Highlands-Pier 11, E34th St.	956	935	972	954	(20.4)
Total Seastreak	2,618	2,594	2,574	2,595	1.6
New York Water Taxi					
Brooklyn Army Terminal - Pier 11	178	0	0	n/c	n/c
Haverstraw-Yonkers- WFC & Pier 11 (3)	95	82	92	90	n/c
Total NY Water Taxi	273	82	92	90	n/c
Liberty Park Water Taxi					
Liberty Landing - WFC	298	267	317	294	(15.0)
Total Private Ferries	32,735	30,946	32,160	31,888	0.6
Staten Island Ferry	59,141	59,637	69,295	62,691	15.4
Long Island Ferries					
Bridgeport-Port Jefferson Steamboat Co.	2,555	2,657	2,801	2,671	12.7
TOTAL	94,431	93,240	104,256	97,249	10.0

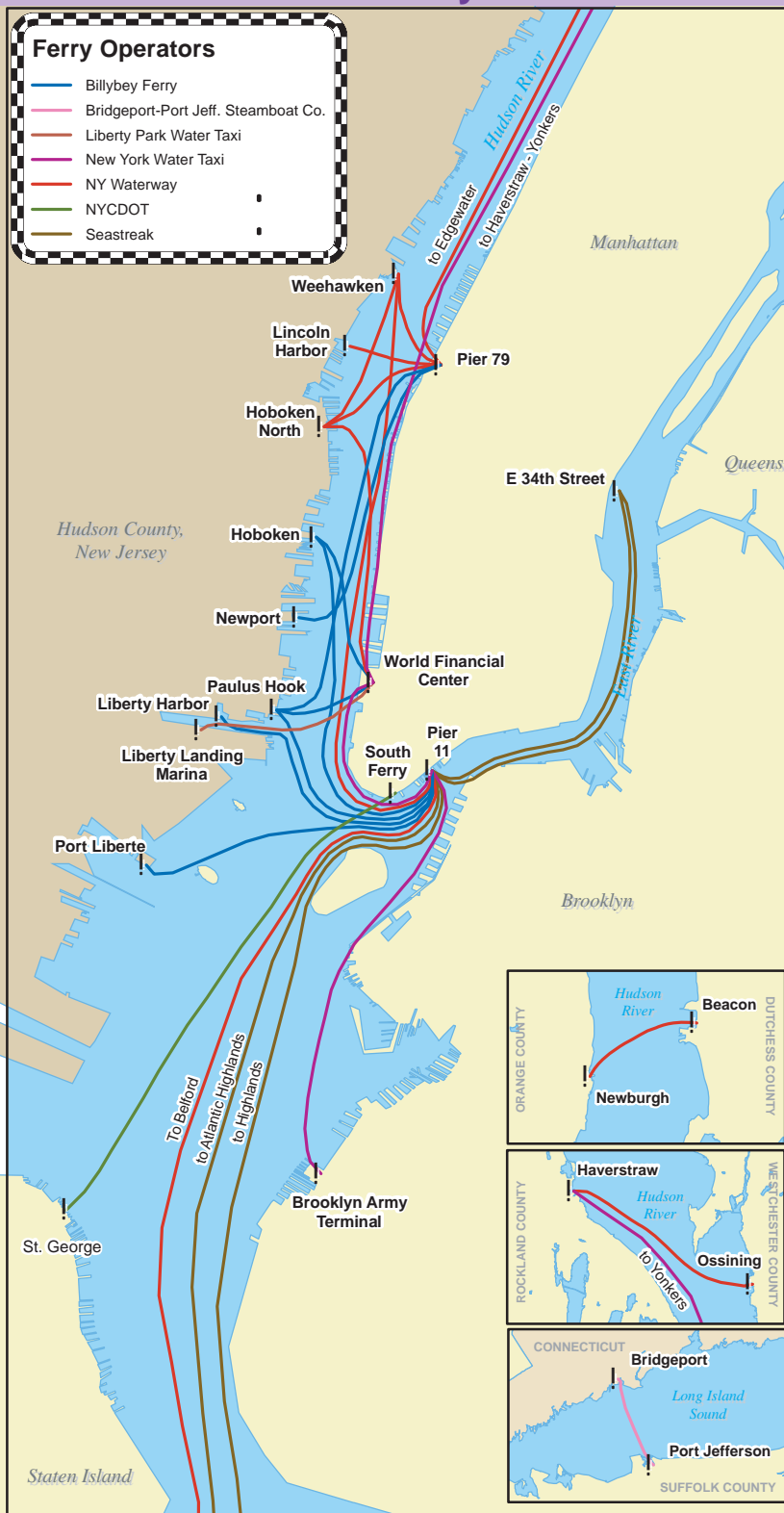
(1) New service started on March 5, 2007

n/c Not comparable due to change in some route/ownership

(2) Paulus Hook terminal was formerly named Colgate terminal.

(3) New service started on May 1, 2007.

Commuter Ferry Routes

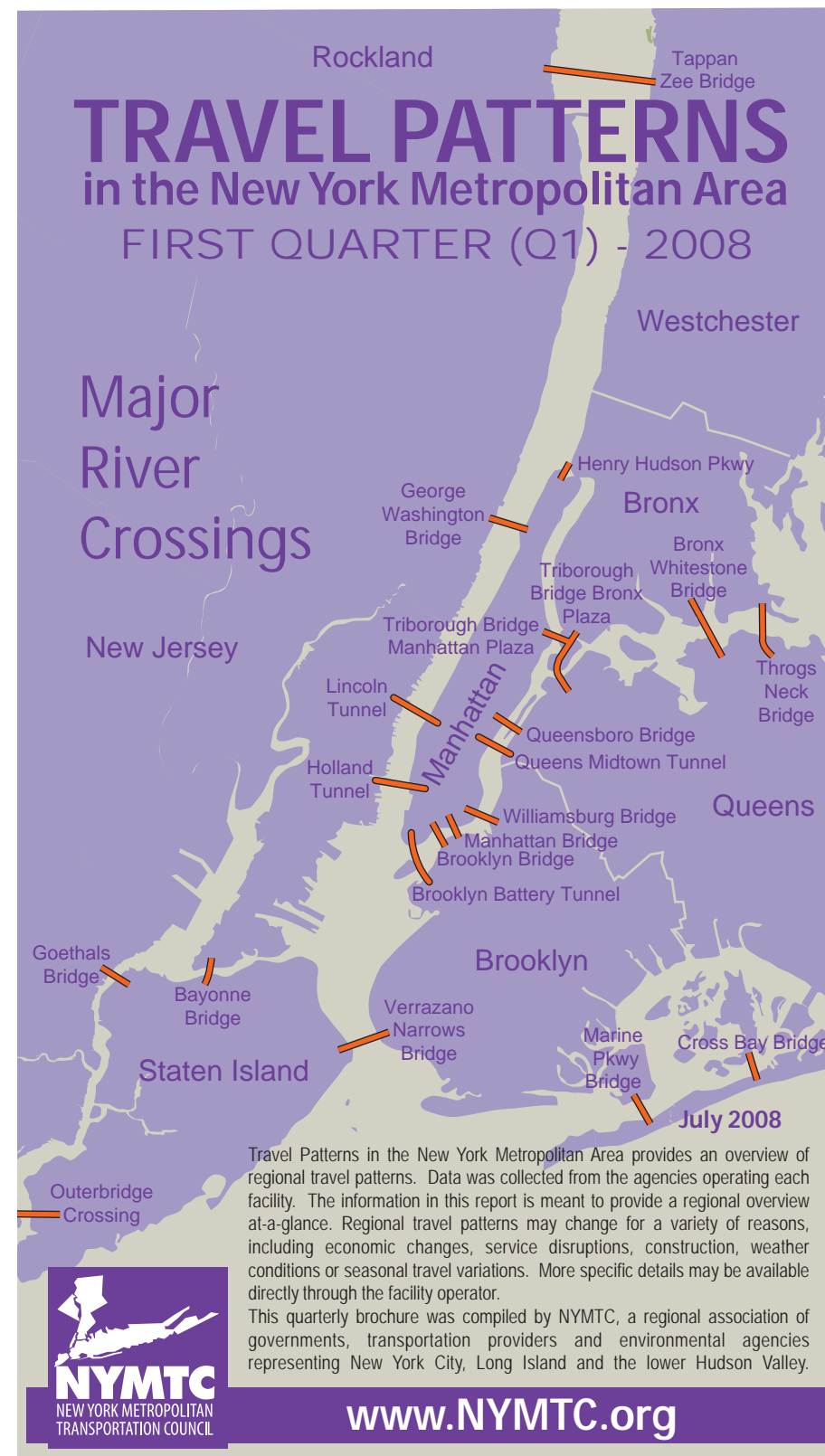


TRAVEL PATTERNS

in the New York Metropolitan Area

FIRST QUARTER (Q1) - 2008

Major River Crossings



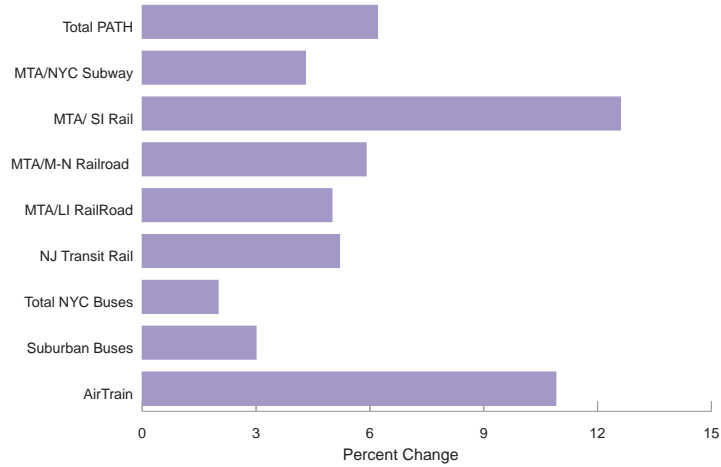
Travel Patterns in the New York Metropolitan Area provides an overview of regional travel patterns. Data was collected from the agencies operating each facility. The information in this report is meant to provide a regional overview at-a-glance. Regional travel patterns may change for a variety of reasons, including economic changes, service disruptions, construction, weather conditions or seasonal travel variations. More specific details may be available directly through the facility operator.

This quarterly brochure was compiled by NYMTC, a regional association of governments, transportation providers and environmental agencies representing New York City, Long Island and the lower Hudson Valley.



www.NYMTC.org

Average Weekday Bus and Rail Ridership by Operator Q1 2007-Q1 2008 Percent Change

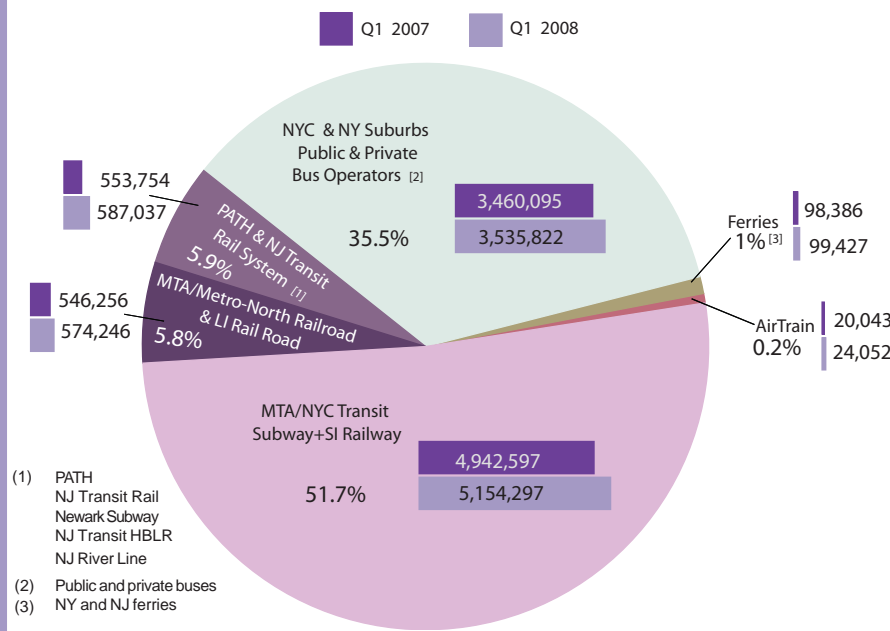


Average Weekday Bus and Rail Ridership

	Q1 2008				Q1 2007/ Q1 2008 % change
	Jan.	Feb.	Mar.	Avg. Q1	
NEW YORK TRANSIT RAIL SYSTEM					
MTA/NYC Transit Subway	4,977,785	5,139,757	5,296,770	5,138,104	4.3
MTA/Staten Island Railway	16,379	15,972	16,227	16,193	12.6
MTA/Metro-North Railroad (1)	273,856	275,293	279,252	276,134	5.0
MTA/LI Rail Road	292,741	298,450	302,845	298,012	5.2
MTA (2) RAIL Total	5,560,761	5,729,472	5,895,094	5,728,442	4.4
NEW YORK CITY BUSES					
MTA/NYC Transit Bus	2,296,975	2,318,481	2,449,360	2,354,939	0.3
MTA Bus Company (former private buses)	374,076	388,290	401,997	388,121	12.9
Atlantic Express	2,979	2,868	2,993	2,947	6.3
Total NYC Buses	2,674,030	2,709,639	2,854,350	2,746,006	2.0
PORT AUTHORITY TRANS-HUDSON RAIL					
PATH-New York Stations	104,563	105,759	107,980	106,101	6.3
PATH-New Jersey Stations	137,388	140,575	141,997	139,987	6.1
PATH Total	241,951	246,334	249,977	246,087	6.2
NEW JERSEY TRANSIT RAIL SYSTEM (5)					
New Jersey Transit Rail	(5)	(5)	(5)	273,550	5.1
Newark Subway (8)	(5)	(5)	(5)	20,150	2.8
New Jersey Transit HBLR (3)	(5)	(5)	(5)	39,200	12.6
River Line	(5)	(5)	(5)	8,050	10.3
NJ Rail Total				340,950	5.9
AIRPORT RAIL ACCESS					
Newark AirTrain	6,541	5,897	7,884	6,774	n/c
JFK AirTrain	16,380	14,720	20,735	17,278	7.8
SUBURBAN BUSES					
New Jersey Transit Bus	(5)	(5)	(5)	530,250	2.1
MTA/Long Island Bus	102,750	102,707	105,578	103,678	3.0
Westchester County Bee-Line Bus	101,723	102,081	104,377	102,727	8.4
Orange County Buses (6)	(5)	(5)	(5)	3,052	4.6
Putnam County Buses	617	537	630	595	1.3
Rockland County Buses (6, Note 1)	(5)	(5)	(5)	22,641	4.6
Dutchess County Buses	2,049	1,989	2,152	2,063	-20.0
City of Long Beach	1,209	1,165	1,107	1,160	1.3
Suffolk County Buses (7)	23,451	22,637	24,859	23,649	3.4
Total Suburban Buses				789,816	3.0
Grand Total				9,875,354	3.7

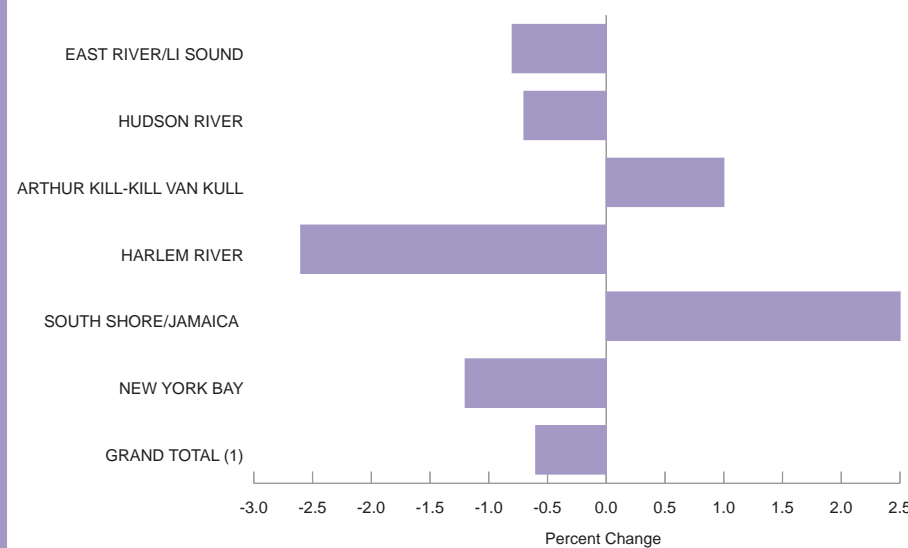
(1) M-N Railroad ridership covers MTA trains leaving from GCT (Grand Central Terminal) and Penn Stations (West Hudson trains)
 (2) MTA - Metropolitan Transportation Authority (6) Local and Express buses
 (3) Hudson Bergen Light Rail System (7) Suffolk Cty includes local and pass-through buses. HART and Patchogue buses include
 (4) Huntington Area Rapid Transit (8) Subway data was formerly added to HBLR
 (5) Only quarterly data available. n/c - not comparable due stoppage in 2007.
 Note 1: Rockland Cty buses are operated by City of Rockland (TOR, TZX, TRIIPS) and others (private operators).
 Orange-Westchester Link (through buses) not included. First Qtr 2007 data corrected by County of Rockland Planning Dept.
 Sources: Port Authority of NY & NJ, MTA, New Jersey Transit Corp., NYS DOT, NYC DOT, Other NY counties bus operators.

Average Weekday Passengers by Public Transportation Mode Q1 2007 and Q1 2008



- (1) PATH
 NJ Transit Rail
 Newark Subway
 NJ Transit HBLR
 NJ River Line
 (2) Public and private buses
 (3) NY and NJ ferries

Vehicular Traffic for Major River Crossings by Waterway Q1 2007 and Q1 2008 Percent Change



(1) Total excludes NYC DOT East River bridges, data not available

Average Weekday Major Vehicular River Crossings Traffic

		Q1 2008				Q1 2007/ Q1 2008 % change
		Jan.	Feb.	Mar.	Avg. Q1	
Queens-Midtown Tunnel	MTA B&T (1)	80,090	81,725	84,307	82,041	-0.4
Brooklyn Battery Tunnel	MTA B&T	50,452	51,126	52,023	51,200	-5.9
Triborough Bridge-Bronx Plaza	MTA B&T	75,452	76,332	78,757	76,847	0.2
Triborough Bridge-Manhattan Plaza	MTA B&T	86,257	87,011	89,704	87,657	-2.5
Bronx-Whitestone Bridge	MTA B&T	108,534	108,042	114,137	110,238	2.3
Throgs Neck Bridge	MTA B&T	106,177	106,408	111,648	108,078	-0.8
Total (without NYCDOT East River Bridges)		506,962	510,644	530,576	516,061	-0.8
HUDSON RIVER CROSSINGS						
George Washington Bridge	PANY&NJ (2)	281,845	285,941	275,803	281,196	-1.0
Lincoln Tunnel	PANY&NJ	113,892	116,028	117,794	115,905	-1.8
Holland Tunnel	PANY&NJ	91,230	93,217	94,551	92,999	0.9
Tappan-Zee Bridge	NYS TA (3)	129,687	125,985	137,719	131,130	-0.6
Bear Mountain Bridge	NYS BA (4)	16,310	15,938	17,097	16,448	1.5
Total		632,964	637,109	642,964	637,679	-0.7
ARTHUR KILL CROSSINGS						
Bayonne Bridge	PANY&NJ (2)	23,514	23,539	22,865	23,306	0.1
Goethals Bridge	PANY&NJ	72,720	74,471	76,212	74,468	2.8
Outerbridge Crossing	PANY&NJ	78,014	77,887	79,795	78,565	-0.4
Total		174,248	175,897	178,872	176,339	1.0
HARLEM RIVER CROSSINGS						
Henry Hudson Bridge	MTA B&T (1)	63,486	62,832	64,583	63,634	-2.6
SOUTH SHORE/JAMAICA BAY CROSSINGS						
Marine Parkway Bridge	MTA B&T (1)	20,196	19,614	20,917	20,242	0.8
Cross Bay Bridge	MTA B&T	20,553	20,032	20,911	20,499	1.0
Atlantic Beach Bridge	NCBA (5)	21,549	21,079	22,623	21,750	5.7
Total		62,298	60,725	64,451	62,491	2.5
NEW YORK BAY CROSSINGS						
Verrazano-Narrows Bridge	MTA B&T (1)	184,190	182,616	189,038	185,281	-1.2
GRAND TOTAL (w/o East River bridges)		1,624,148	1,629,823	1,670,484	1,641,485	-0.6

- (1) MTA B&T- Metropolitan Transportation Authority, Bridges and Tunnels
 (2) Port Authority of New York & New Jersey
 (3) New York State Thruway Authority
 (4) New York State Bridge Authority
 (5) Nassau County Bridge Authority
 Note 1: Excludes East River Bridges. Traffic count is not available.

