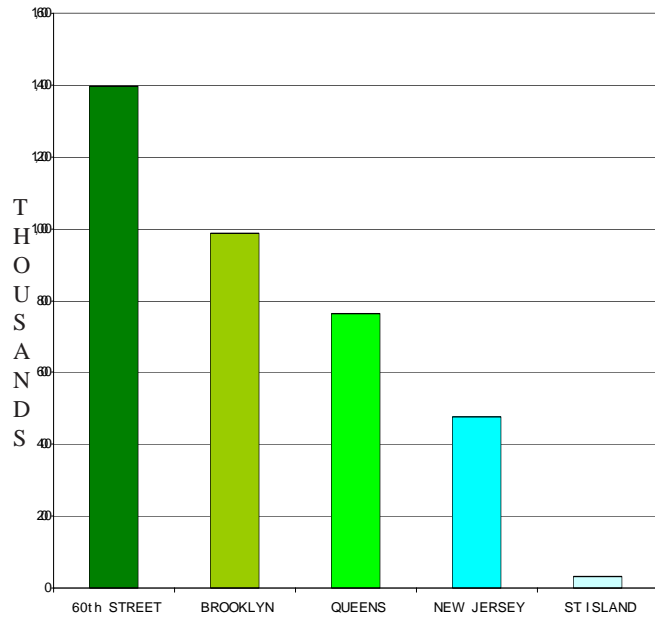
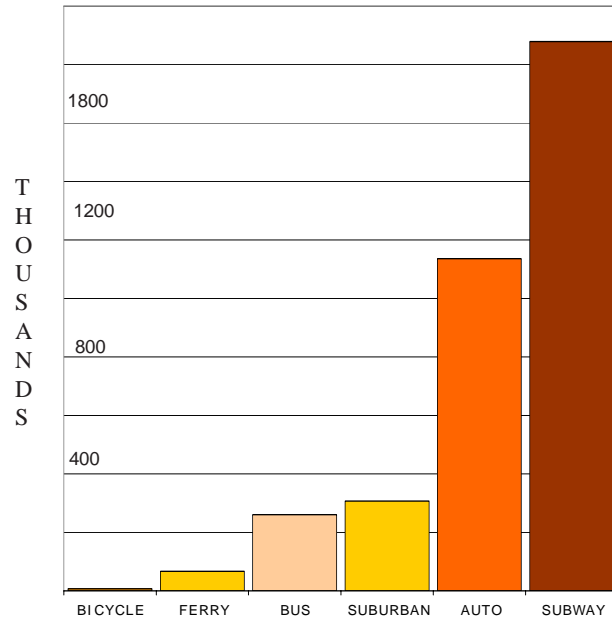


TRAVELERS ENTERING THE HUB ON A 2002 FALL BUSINESS DAY

BY SECTOR



BY MODE



SELECTED

	2001	2002	Change
Total Persons Entering and Leaving	6,741,920	7,151,008	5.7%
Total Persons Entering and Leaving Via Public Transportation	4,783,055	4,942,595	3.2%
Total Persons Entering and Leaving Via Autos, Taxis, Vans, and Trucks	1,947,884	2,195,765	11.3%
Total Auto, Taxi and Truck Vehicles Entering and Leaving*	1,371,328	1,569,802	12.6%
Total Bus Vehicles Entering and Leaving	21,432	22,938	6.6%
Total Bus passengers Entering/Leaving	504,244	519,550	2.9%
Max. Net Accumulation of Persons	1,253,818	1,267,861	1.1%
Max. Net Accumulation of Motor Vehicles	67,093	60,181	-11.5%
Total TRAINS Entering and Leaving	10,911	11,502	5.1%
Total RAIL CARS Entering and Leaving	98,989	100,947	1.9%

COMPARISONS

MANHATTAN CBD CORDON CROSSINGS

60th Street Sector

- Eighth Ave and Eighth Ave – IND
- Broadway and Seventh Ave -IRT
- Columbus Avenue
- Amsterdam Avenue
- Westside Highway
- West End Avenue

60th Street Sector

- Madison Avenue
- Park Avenue Metro-North Commuter Rail
- Lexington Avenue and IRT
- Third Avenue
- Second Avenue
- First Avenue
- York Avenue
- Franklin D. Roosevelt Drive

Queens Sector

- Sixty-Third St. Tunnel
- Fifty-Third St. Tunnel-IND
- Sixtieth St. Tunnel-BMT/IND
- Queensboro Bridge-Tramway
- Steinway Tunnel-IRT
- Queens Midtown Tunnel-IRT
- Amtrak/LIRR Tunnels

New Jersey Sector

- Lincoln Tunnel
- Amtrak/N.J. Transit Tunnels
- Uptown Path Tunnel
- Holland Tunnel
- Downtown Path Tunnel

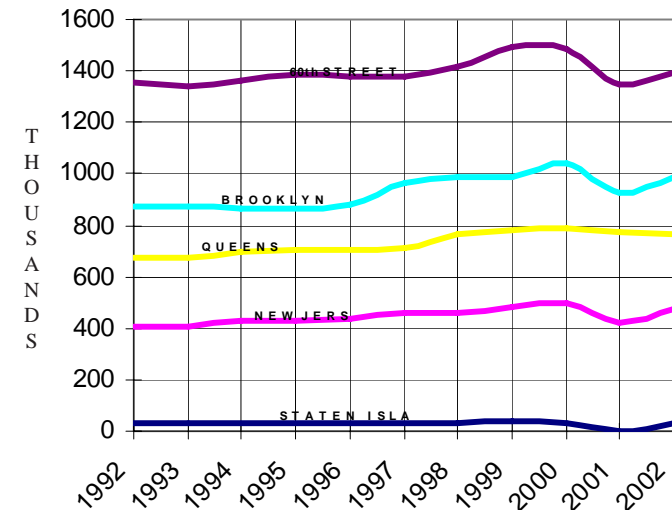
Brooklyn Sector

- Fourteenth St. Tunnel-BMT
- Williamsburg Bridge-BMT
- Rutgers Tunnel -IND
- Montague Tunnel -BMT
- Manhattan Bridge -BMT
- Brooklyn Bridge
- Cranberry Tunnel -IND
- Clark Tunnel -IRT
- Joralemon Tunnel -IRT
- Brooklyn Battery Tunnel

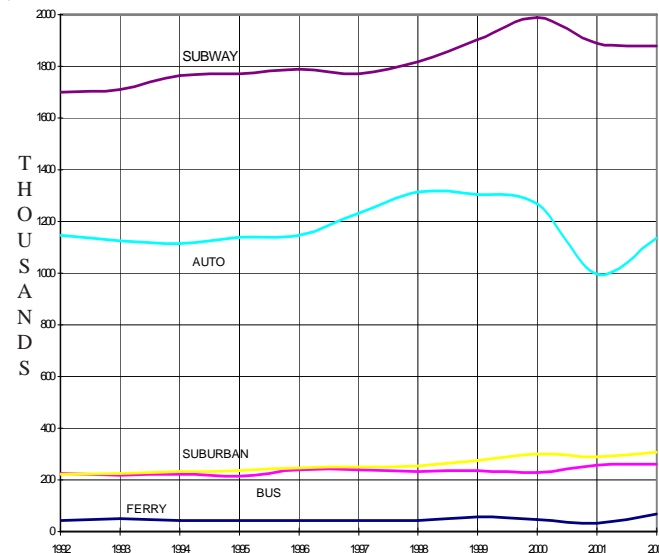
Staten Island Sector

- Staten Island Ferry

HISTORICALLY BY SECTOR, 1992-2002



HISTORICALLY BY MODE, 1992-2002



HUB-BOUND TRAVEL

At a Glance

2002

WWW.NYMTC.ORG

New York Metropolitan
Transportation Council

199 Water St. New York, NY 10038
Tel: 212.383.7235 Fax: 212.383.7228

December 2004

2002 HUB -BOUND TRAVEL ON A FALL BUSINESS DAY

ENTERING

LEAVING

ENTERING/LEAVING

SECTOR/MODE	ENTERING				LEAVING				ENTERING/LEAVING			
	TRAINS	RAILCARS	VEHICLES	TRAVELLERS	TRAINS	RAILCARS	VEHICLES	TRAVELLERS	TRAINS	RAILCARS	VEHICLES	TRAVELLERS
60TH STREET SECTOR, TOTAL	1,819	16,462	385,017	1,397,607	1,824	16,470	384,205	1,346,930	3,643	32,932	769,222	2,744,537
SUBWAY	1,551	14,642	-	751,826	1,551	14,642	-	686,964	3,102	29,284	-	1,438,790
IRT LEX. AVE. EXPRESS	290	2,900	-	166,151	314	3,140	-	154,383	604	6,040	-	320,534
IRT LEX. AVE. LOCAL	263	2,630	-	164,393	248	2,480	-	153,119	511	5,110	-	317,512
IND 8TH AVE. EXPRESS	270	2,260	-	124,239	298	2,504	-	116,300	568	4,764	-	240,539
IND 8TH AVE. LOCAL	221	1,782	-	53,887	196	1,568	-	42,987	417	3,350	-	96,874
IRT BROADWAY/7TH AVE. EXPRESS	263	2,630	-	129,563	255	2,550	-	105,604	518	5,180	-	235,167
IRT BROADWAY/7TH AVE. LOCAL	244	2,440	-	113,933	240	2,400	-	114,571	484	4,840	-	228,164
MOTOR VEHICLES*	-	-	385,017	542,663	-	-	384,205	559,191	-	-	769,222	1,101,854
FDR DRIVE	-	-	85,336	99,174	-	-	68,936	80,822	-	-	154,272	179,996
YORK AVENUE	-	-	20,579	31,050	-	-	19,188	28,643	-	-	39,767	59,693
SECOND/FIRST(OB) AVES.	-	-	49,893	69,716	-	-	41,654	64,207	-	-	91,547	133,923
QUEENSBORO BR. RAMP	-	-	0	0	-	-	33,496	53,288	-	-	33,496	53,288
NEW STREET	-	-	0	0	-	-	3,943	5,928	-	-	3,943	5,928
LEXINGTON/THIRD(OB) AVES.	-	-	31,944	40,062	-	-	36,227	57,802	-	-	68,171	97,864
PARK AVENUE	-	-	24,791	30,082	-	-	20,575	28,758	-	-	45,366	58,840
FIFTH/MADISON(OB) AVES.	-	-	33,354	65,691	-	-	27,062	65,406	-	-	60,416	131,097
CENTRAL PARK Dr. AND 7TH AVE.	-	-	9,247	17,252	-	-	0	0	-	-	9,247	17,252
CENTRAL PARK Dr. & 60TH STREET	-	-	0	0	-	-	0	0	-	-	0	0
CENTRAL PARK Dr. & 6TH AVENUE	-	-	0	0	-	-	9,655	17,503	-	-	9,655	17,503
CENTRAL PARK Dr. & COLUMBUS CIRCLE	-	-	0	0	-	-	412	5,155	-	-	412	5,155
EIGHTH AVENUE/CENTRAL PARK WEST	-	-	0	0	-	-	17,015	7,952	-	-	17,015	7,952
BROADWAY	-	-	22,801	46,992	-	-	15,462	22,708	-	-	38,263	69,699
COLUMBUS AVE./AMSTERDAM(OB) AVE.	-	-	32,592	48,086	-	-	26,412	39,325	-	-	59,004	87,411
WEST END AVENUE	-	-	17,480	22,360	-	-	10,175	14,490	-	-	27,655	36,849
WEST SIDE HIGHWAY	-	-	57,000	72,198	-	-	53,993	67,205	-	-	110,993	139,403
SUBURBAN RAIL	268	1,820	-	98,169	273	1,828	-	96,002	541	3,648	-	194,171
MTA-HUDSON	66	423	-	20,639	64	415	-	20,254	130	838	-	40,893
MTA-HARLEM	86	600	-	34,039	94	634	-	33,551	180	1,234	-	67,590
MTA-NEW HAVEN	103	732	-	41,746	102	714	-	40,515	205	1,446	-	82,261
AMTRAK EMPIRE SERVICE	13	65	-	1,745	13	65	-	1,682	26	130	-	3,427
FERRY	-	-	-	0	-	-	-	0	-	-	-	0
BICYCLE	-	-	-	4,949	-	-	-	4,773	-	-	-	9,722
BROOKLYN SECTOR, TOTAL	2,066	18,084	179,366	986,533	2,056	18,036	167,332	896,830	4,122	36,120	346,698	1,883,363
SUBWAY	2,066	18,084	-	646,584	2,056	18,036	-	628,248	4,122	36,120	-	1,274,832
BMT 14TH ST. TUNNEL	194	1,552	-	88,713	195	1,560	-	78,759	389	3,112	-	167,472
WILLIAMSBURG BRIDGE-BMT	222	1,776	-	42,390	222	1,776	-	43,574	444	3,552	-	85,964
IND RUTGERS TUNNEL	194	1,562	-	65,994	192	1,554	-	69,129	386	3,116	-	135,123
MANHATTAN BRIDGE-BMT	338	2,896	-	130,415	428	3,632	-	146,134	766	6,528	-	276,549
IND CRANBERRY TUNNEL	271	2,294	-	128,475	270	2,290	-	108,020	541	4,584	-	236,495
IRT CLARK TUNNEL	276	2,760	-	58,895	274	2,740	-	67,064	550	5,500	-	125,959
BMT MONTAGUE TUNNEL	316	2,694	-	42,913	224	1,974	-	39,846	540	4,668	-	82,759
IRT JORALEMON TUNNEL	255	2,550	-	88,789	251	2,510	-	75,722	506	5,060	-	164,511
MOTOR VEHICLES *	-	-	179,366	337,590	-	-	167,332	266,598	-	-	346,698	604,188
WILLIAMSBURG BRIDGE	-	-	55,013	134,090	-	-	48,238	83,000	-	-	103,251	217,090
MANHATTAN BRIDGE	-	-	30,924	45,871	-	-	35,196	51,403	-	-	66,120	97,274
BROOKLYN BRIDGE	-	-	61,210	91,141	-	-	59,935	74,366	-	-	121,145	165,507
BROOKLYN BATTERY TUNNEL	-	-	32,219	66,489	-	-	23,963	57,829	-	-	56,182	124,318
FERRY	-	-	-	902	-	-	-	1,003	-	-	-	1,905
BICYCLE	-	-	-	1,457	-	-	-	981	-	-	-	2,438
QUEENS SECTOR, TOTAL	1,516	13,520	133,608	765,112	1,514	13,557	125,645	739,539	3,030	27,077	259,253	1,504,652
SUBWAY	1,124	10,427	-	406,895	1,137	10,571	-	415,174	2,261	19,433	-	822,069
BMT 60TH STREET TUNNEL	338	2,876	-	122,204	343	2,916	-	125,495	681	5,792	-	247,699
IND 53RD STREET TUNNEL	311	2,882	-	114,690	308	2,858	-	111,879	619	5,740	-	226,569
IRT STEINWAY TUNNEL	285	3,135	-	89,001	293	3,223	-	101,390	578	6,358	-	190,391
63RD STREET TUNNEL	190	1,534	-	81,000	193	1,574	-	76,410	383	3,108	-	157,410
MOTOR VEHICLES *	-	-	133,608	222,141	-	-	125,645	194,484	-	-	264,989	416,626
QUEENS MIDTOWN TUNNEL	-	-	45,334	83,148	-	-	37,500	53,938	-	-	259,253	223,695
QUEENSBORO BRIDGE	-	-	88,274	138,993	-	-	88,145	140,547	-	-	82,834	268,356
SUBURBAN RAIL	392	3,093	-	135,356	377	2,986	-	129,363	632	5,376	-	264,719
L.I.R.R.	373	2,961	-	132,220	358	2,856	-	126,430	731	5,817	-	258,650
AMTRAK N. E. CORRIDOR	19	132	-	3,136	19	130	-	2,933	38	262	-	6,069
FERRY	-	-	-	282	-	-	-	192	-	-	-	474
PRIVATE FERRY	-	-	-	282	-	-	-	192	-	-	-	474
BICYCLE	-	-	-	438	-	-	-	326	-	-	-	764
NEW JERSEY SECTOR, TOTAL	342	2,484	104,137	475,819	329	2,334	117,931	479,640	672	4,818	222,068	955,459
RAIL RAPID TRANSIT @	148	1,036	-	73,166	128	895	-	68,100	276	1,931	-	141,266
PATH DOWNTOWN TUNNEL	0	0	-	0	0	0	-	0	0	0	-	955,459
PATH UPTOWN TUNNEL	148	1,036	-	73,166	128	895	-	68,100	276	1,931	-	141,266
MOTOR VEHICLES *	-	-	104,137	294,112	-	-	117,931	302,678	-	-	222,068	596,790
HOLLAND TUNNEL	-	-	45,722	69,783	-	-	46,835	73,401	-	-	92,557	143,184
LINCOLN TUNNEL	-	-	58,415	224,329	-	-	71,096	229,277	-	-	129,511	453,606
SUBURBAN RAIL	194	1,448	-	75,842	201	1,439	-	79,930	396	2,887	-	155,772
N. J. TRANSIT N. E. CORRIDOR/COAST	144	1,111	-	65,500	151	1,102	-	69,431	296	2,213	-	134,931
AMTRAK N.E. CORRIDOR	50	337	-	10,342	50	337	-	10,499	100	674	-	20,841
FERRY	-	-	-	32,699	-	-	-	28,932	-	-	-	61,631
PRIVATE FERRY	-	-	-	32,699	-	-	-	28,932	-	-	-	61,631
STATEN ISLAND FERRY	-	-	-	32,649	-	-	-	32,110	-	-	356	64,759
BICYCLE aboard Staten Island Ferry	-	-	-	58	-	6	-	6	-	-	119	-
Cars aboard Staten Island Ferry	-	-	0	0	-	0	-	0	-	0	0	0
STATEN ISLAND FERRY	-	-	-	32,649	-	-	-	32,110	-	-	-	64,759
ROOSEVELT ISLAND TRAMWAY	-	-	-	1,140	-	-	-	1,178	-	-	-	2,318
TOTAL, ALL SECTORS	5,743	50,550	802,128	3,658,918	5,522	50,397	795,113	3,496,233	11,265	100,947	1,597,241	7,155,151

MOTOR VEHICLES	AUTO-TAXI-TRUCKS-VANS				B U S E S				Manhattan Central Business District Bicycle Volumes 7am-7pm			
	ENTERING		LEAVING		ENTERING		LEAVING		Avenues and Bridges	2,001	2,002	Change %
60TH STREET SECTOR	376,833	485,672	381,098	496,945	2,934	56,991	3,107	62,246				
FDR DRIVE	85,336	99,174	68,936	80,822	0	0	0	0				
YORK AVENUE +	20,400	26,665	1									