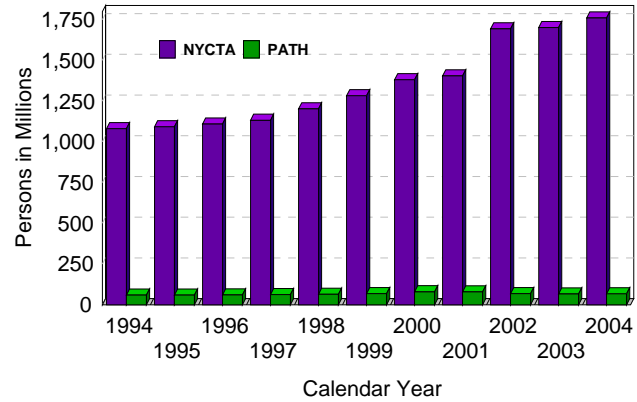
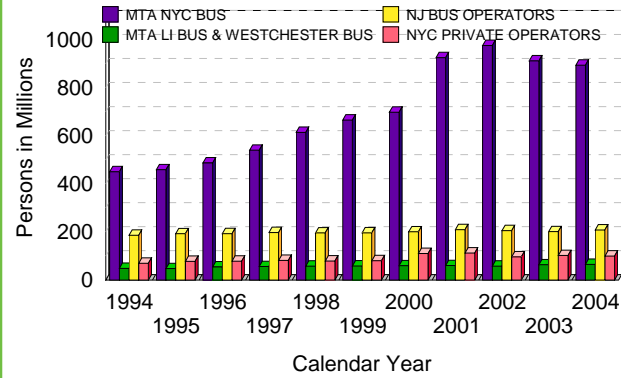


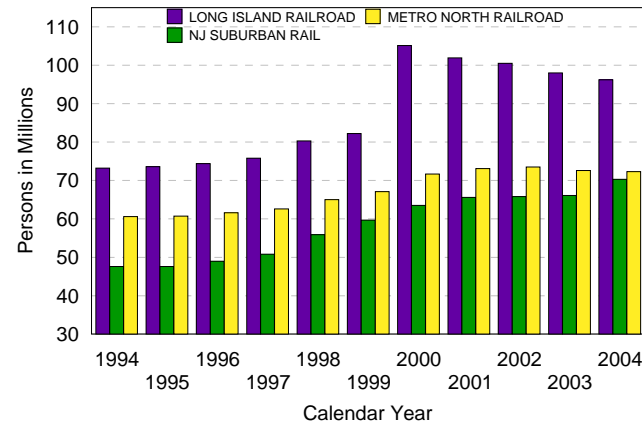
RAPID TRANSIT ANNUAL REVENUE PASSENGERS



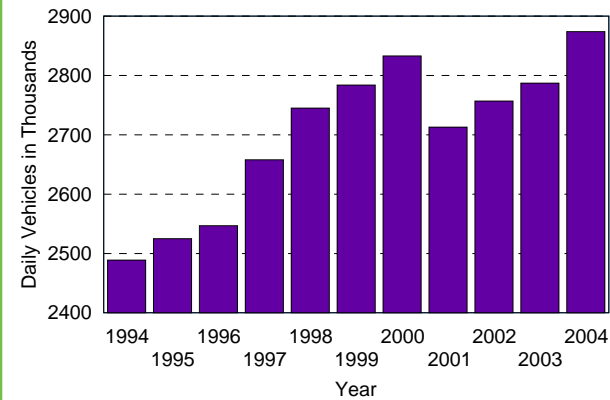
BUS TRANSIT ANNUAL REVENUE PASSENGERS



COMMUTER RAIL ANNUAL REVENUE PASSENGERS



MAJOR RIVER CROSSINGS TOTAL DAILY TRAFFIC



2004 MAJOR VEHICULAR RIVER CROSSINGS

Annual Daily Traffic
(Total two way)

	Total Vehicles	Auto	Percent Auto
HUDSON RIVER			
----- New York - New York			
Kingston-Rhinecliff Bridge	20,473	19,793	96.7
Mid-Hudson Bridge	38,409	37,066	96.5
Newburgh-Beacon Bridge	70,765	61,163	86.4
Bear Mountain Bridge	17,771	17,351	97.6
Tappan Zee Bridge	143,418	131,378	91.6
Verazano-Narrows Bridge	205,544	183,065	89.1
----- TOTAL NY-NJ	496,380	449,816	90.6
----- New Jersey - New York			
George Washington Bridge	296,997	269,692	90.8
Lincoln Tunnel	119,088	101,201	85.0
Holland Tunnel	92,948	89,230	96.0
----- TOTAL NJ-NY	509,033	460,123	90.4
TOTAL Hudson River	1,005,413	909,939	90.5
ARTHUR KILL-KILL VAN KULL			
----- New Jersey - New York			
Bayonne Bridge	20,907	18,653	89.2
Goethals Bridge	77,513	70,217	90.6
Outerbridge Crossing	85,956	80,540	93.7
----- TOTAL NJ-NY	184,376	169,410	91.9
EAST RIVER			
Brooklyn-Battery Tunnel	54,488	48,679	89.3
Brooklyn Bridge	137,563	126,857	92.2
Manhattan Bridge	79,129	37,203	47.0
Williamsburg Bridge	110,528	71,574	64.8
Queens-Midtown Tunnel	86,599	78,507	90.7
Queensboro Bridge	180,369	139,839	77.5
Tri-Boro Bridge (Manhattan)	97,958	86,535	88.3
Tri-Boro Bridge (Bronx Plaza)	82,810	70,707	85.4
Bronx-Whitestone Bridge	117,591	115,833	98.5
Throgs Neck Bridge	112,001	96,100	85.8
----- TOTAL EAST RIVER	1,059,036	871,834	82.3
HARLEM RIVER			
Willis Avenue Bridge (Northbound)	74,700	61,478	82.3
Willis Avenue Bridge (Southbound)	47,053	36,551	77.7
Madison Avenue Bridge	48,723	39,325	80.7
145th Street Bridge	25,994	22,199	85.4
Macombs Dam Bridge	40,558	34,832	85.9
Alexander Hamilton Bridge	175,323	141,393	80.6
Washington Avenue Bridge	57,530	50,591	87.9
University Heights Bridge	47,350	41,169	86.9
Broadway Bridge	35,190	31,489	89.5
Henry Hudson Bridge	73,114	67,285	92.0
----- TOTAL HARLEM RIVER	625,535	526,312	84.1
GRAND TOTAL	2,874,360	2,477,495	86.2

Source: Bridge and tunnel operators.



REGIONAL TRANSPORTATION

At a Glance

2004



2004

SELECTED PUBLIC TRANSPORTATION STATISTICS

	OPERATING DATA			FINANCIAL DATA				PERFORMANCE MEASURES						REVENUE EQUIPMENT				
	Annual Psgrs.	Vehicle Miles Traveled	Psgr. Miles Traveled	Operating Expense \$	Operating Revenue \$	Psgr. Revenue \$	Surplus Deficit (f) \$	Psgrs. Per Veh. Mile	Psgr. Miles Per Vehicle	Farebox Recovery Ratio (g)	Operating Ratio (h)	Expense Per Psgr. \$	Psgr. Rev. Per Psgr. \$	Deficit Per Psgr. \$	Buses, Boats or Rail Cars	Avg. Age	Avg. Seats	
NEW YORK	All numbers in millions																	
BUS TRANSIT																		
MTA/New York City Transit	894.9	118.8	1,590.6	1,761.4	947.6	b	708.9	-813.8	7.5	13.4	0.40	1.9	2.0	0.8	-0.9	5,081	4	n/a
NYC Private Operators	100.0	22.0	364.1	295.0	297.8	b	121.3	2.8	4.5	16.6	0.41	1.0	3.0	1.2	0.0	1,167	11	47
MTA/Long Island Bus (d)	30.6	12.8	143.4	105.9	39.5	b	38.0	-66.4	2.4	11.2	0.36	2.7	3.5	1.2	-2.2	419	4	45
Long Island Other	5.9	10.6	76.0	40.8	8.6	b	7.6	-32.2	0.6	7.2	0.19	4.7	6.9	1.3	-5.5	273	5	29
Westchester	34.9	10.2	164.5	86.2	119.1	b	83.1	32.9	3.4	16.1	0.96	0.7	2.5	2.4	0.9	427	6	45
TOTAL DOWNSTATE NY BUS *	1,066.3	174.4	2,338.6	2,289.3	1,412.6		958.9	-876.7	6.1	13.4	0.42	1.6	2.1	0.9	-0.8	7,367	6	42
RAPID TRANSIT																		
MTA/New York City Transit	1,760.8	339.8	8,344.2	2,537.6	1,864.6	b	1,837.6	-673.0	5.2	24.6	0.72	1.4	1.4	1.0	-0.4	6,162	21	n/a
MTS/Staten Island Railroad	3.4	2.2	21.5	26.4	4.9	b	4.4	-21.5	1.5	9.8	0.17	5.4	7.8	1.3	-6.3	64	33	n/a
TOTAL RAPID TRANSIT	1,764.2	342.0	8,365.7	2,564.0	1,869.5		1,842.0	-694.5	5.2	24.5	0.72	1.4	1.5	1.0	-0.4	6,226	27	n/a
SUBURBAN RAIL																		
MTA/Metro-North Railroad	72.3	49.7	1,968.4	674.7	433.4	b	403.0	-241.3	1.5	39.6	0.60	1.6	9.3	5.6	-3.3	1,013	21	n/a
MTA/Long Island Rail Road	96.2	58.2	1,994.5	897.9	436.5	b	410.8	-461.4	1.7	34.3	0.46	2.1	9.3	4.3	-4.8	1,138	17	n/a
TOTAL SUBURBAN RAIL	168.5	107.9	3,962.9	1,572.6	869.9		813.8	-702.7	1.6	36.7	0.52	1.8	9.3	4.8	-4.2	2,151	19	n/a
FERRY																		
Staten Island	19.3	0.2	100.6	56.1	1.3		0.3	-54.8	96.5	503.0	0.01	43.2	2.9	0.0	-2.8	7	28	2,277
Private	9.1	0.1	n/a	n/a	n/a		n/a	n/a	n/a	n/a	n/a	n/a	n/a	n/a	n/a	6	10	364
TOTAL	28.4	0.3	100.6	56.1	1.3		0.3	-54.8	94.7	335.3	0.01	43.2	2.0	0.0	-1.9	13	19	1,321
TOTAL NEW YORK TRANSIT	3,027.4	624.6	14,767.8	6,482.0	4,153.3		3,615.0	-2328.7	4.8	23.6	0.56	1.6	2.1	1.2	-0.8	-	-	-
NEW JERSEY																		
BUS TRANSIT																		
New Jersey Transit	150.6	82.6	934.6	621.8	288.1	b	242.9	-333.7	1.8	11.3	0.39	2.2	4.1	1.6	-2.2	2,581	5	47
New Jersey Independents	58.2	44.9	928.6	180.0	190.0	b	168.5	10.0	1.3	20.7	0.94	0.9	3.1	2.9	0.2	1,268	5	45
TOTAL	208.8	127.5	1,863.2	801.8	478.1		411.4	-323.7	1.6	14.6	0.51	1.7	3.8	2.0	-1.6	3,849	5	46
RAPID TRANSIT																		
PATH	67.9	12.8	291.7	189.0	79.1	b	88.5	-109.9	5.3	22.8	0.47	2.4	2.8	1.3	-1.6	259	32	31
Newark City Subway **	9.9	1.6	35.9	54.7	10.6	e,b	8.9	-44.1	6.2	22.4	0.16	5.2	5.5	0.9	-4.5	55	22	69
TOTAL	77.8	14.4	327.6	243.7	89.7		97.4	-154.0	5.4	22.8	0.40	2.7	3.1	1.3	-2.0	314	27	35
SUBURBAN RAIL																		
NJ Transit in NJ	68.8	54.2	1,900.0	621.6	341.5	e,b	287.8	-280.1	1.3	35.1	0.46	1.8	9.0	4.2	-4.1	1,137	20	120
NYS West of Hudson	1.5	1.4	57.6	12.3	5.7	e,b	7.7	-6.6	1.1	41.1	0.63	2.2	8.2	5.1	-4.4	299	28	70
TOTAL	70.3	55.6	1,957.6	633.9	347.2	e,b	295.5	-286.7	1.3	35.2	0.47	1.8	9.0	4.2	-4.1	1,436	23	107
TOTAL NEW JERSEY TRANSIT	356.9	197.5	4,148.4	1,679.4	915.0		804.3	-764.4	1.8	21.0	0.48	1.8	4.7	2.3	-2.1	-	-	-
CONNECTICUT																		
BUS TRANSIT																		
Connecticut Transit (i)	10.7	4.3	37.4	28.7	8.9	b	8.2	-19.8	2.5	8.7	0.29	3.2	2.7	0.8	-1.9	163	3	45
TOTAL CONNECTICUT TRANSIT	10.7	4.3	37.4	28.7	8.9		8.2	-19.8	2.5	8.7	0.29	3.2	2.7	0.8	-1.9	163	3	45

NATIONAL COMPARISON

DOWNSTATE NEW YORK SHARE OF NATIONAL PUBLIC TRANSPORTATION

	2002	2003
BUS TRANSIT	%	%
Total Annual Passengers	23.4	25.1
Total Vehicle Miles	12.3	13.0
Total Passenger Miles	18.7	21.8
Total Operating Expense	19.4	19.9
Total Passenger Revenue	30.2	34.3
Total Passenger Vehicles	15.5	12.9
RAIL RAPID TRANSIT		
Total Annual Passengers	65.9	66.6
Total Vehicle Miles	56.0	57.0
Total Passenger Miles	59.6	59.6
Total Operating Expense	57.8	58.2
Total Passenger Revenue	64.7	66.5
Total Passenger Vehicles	62.3	60.4
SUBURBAN RAIL		
Total Annual Passengers	57.9	57.8
Total Vehicle Miles	54.4	60.0
Total Operating Expense	61.3	62.7
TOTAL NY-NJ-CT % OF NATION		
Total Annual Passengers	37.7	40.0
Total Vehicle Miles	24.1	24.9
Total Operating Expense	33.0	33.4
Total Passenger Vehicles	23.5	20.3

- a- Total excludes NYC Privates
- b- Excludes Subsidies
- c- Covers NY-NJ Operators
- c*- Covers only pier 11, pier A & WFC
- d- Includes Para transit
- e- Estimated
- f- The deficit is equal to operating revenue minus operating expense
- g- The farebox recovery ratio is equal to passenger revenue divided by expense
- h- The operating ratio is equal to operating expense divided by operating revenue
- i- Fairfield County, New Haven County, Litchfield County, Exclude Transit Districts and Private operators
- n/a- Data not available at press time
- *- Excludes Hudson Valley Other
- ** - Data include Hudson Bergen Light Rail Transit and Newark City Subway



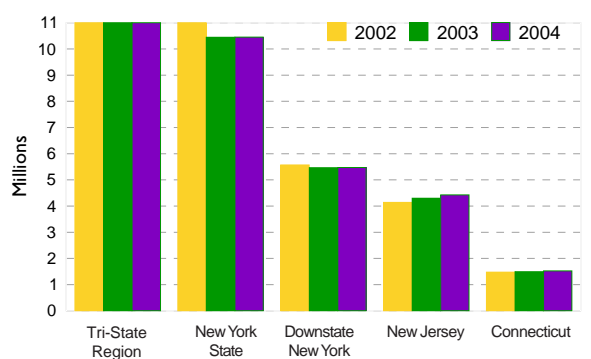
Sources: - Transit Operators data Biennial Statistics CTDOT Bureau of Public Transportation (2000/2001). National Transit Database 2004 (Profiles). APTA 2004 Public Transportation Fact Book. NYMTC estimates.

This brochure is produced in support of the Council's Transportation Plan, and provides an advance update of the data to be covered in the annual Regional Transportation Statistical Report. All brochures and reports are distributed in the interest of information exchange.

For additional information about data in this brochure please call **Salvatore Mamone** - NYMTC Data Services Bureau Monitoring and Analysis Unit at **212.383.7228**, **smamone@dot.state.ny.us** or visit our website at **www.nymtc.org**

ANNUAL MOTOR VEHICLE REGISTRATIONS

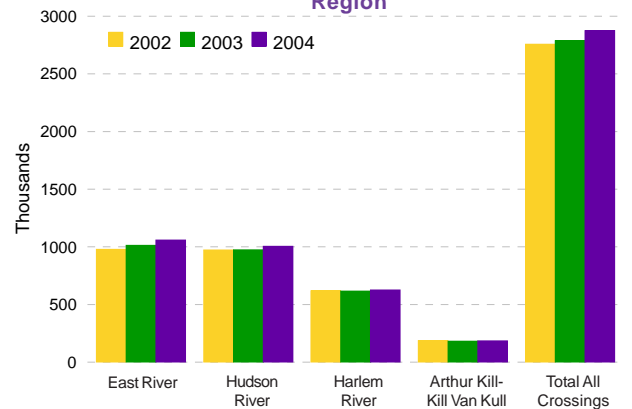
Region



MAJOR RIVER CROSSINGS

AVERAGE ANNUAL DAILY TRAFFIC

Region



REVENUE PASSENGERS IN THE REGION

