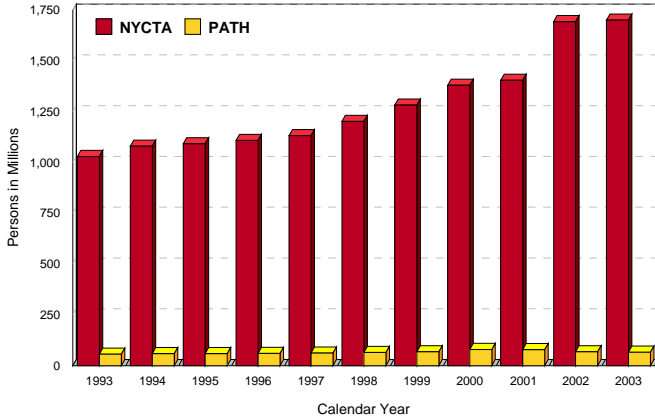
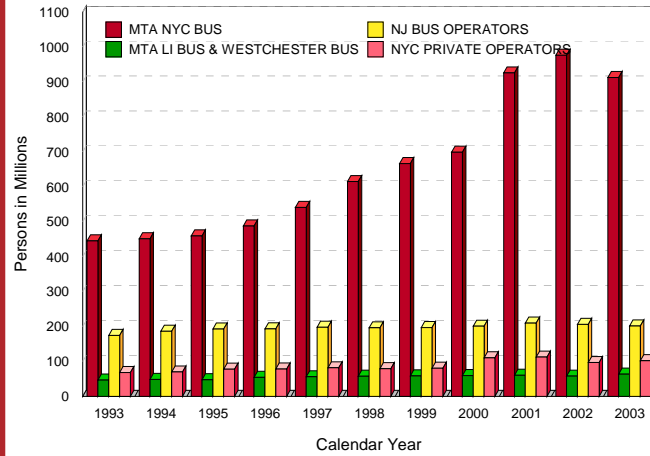


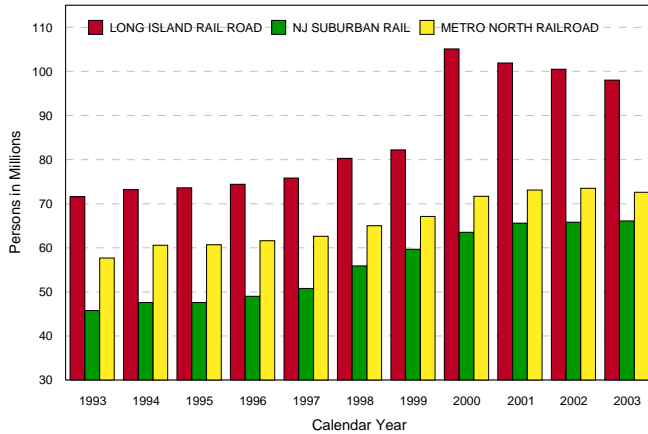
## RAPID TRANSIT ANNUAL REVENUE PASSENGERS



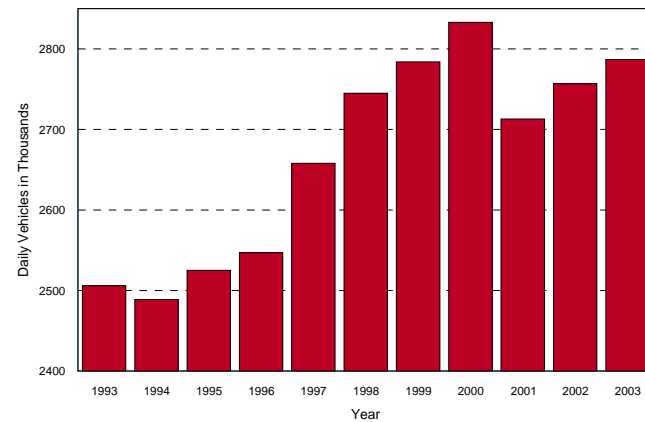
## BUS TRANSIT ANNUAL REVENUE PASSENGERS



## COMMUTER RAIL ANNUAL REVENUE PASSENGERS



## MAJOR RIVER CROSSINGS TOTAL DAILY TRAFFIC



## 2003 MAJOR VEHICULAR RIVER CROSSINGS

Annual Daily Traffic  
(Total two way)

	Total Vehicles	Auto	Percent Auto
<b>HUDSON RIVER</b>			
----- New York - New York			
Kingston-Rhinecliff Bridge	20,027	19,328	96.5
Mid-Hudson Bridge	37,605	36,326	96.6
Newburgh-Beacon Bridge	69,441	59,948	86.3
Bear Mountain Bridge	17,870	17,465	97.7
Tappan Zee Bridge	136,920	128,062	93.5
Verazzano-Narrows Bridge	196,494	181,595	92.4
----- <b>TOTAL NY-NJ</b>	<b>478,357</b>	<b>442,724</b>	<b>92.6</b>
----- New Jersey - New York			
George Washington Bridge	290,252	264,950	91.3
Lincoln Tunnel	115,503	99,291	86.0
Holland Tunnel	90,771	86,521	95.3
----- <b>TOTAL NJ-NY</b>	<b>496,526</b>	<b>450,762</b>	<b>90.8</b>
<b>TOTAL Hudson River</b>	<b>974,883</b>	<b>893,486</b>	<b>91.7</b>
<b>ARTHUR KILL-KILL VAN KULL</b>			
----- New Jersey - New York			
Bayonne Bridge	20,194	18,266	90.5
Goethals Bridge	78,056	70,822	90.7
Outerbridge Crossing	83,705	78,622	93.9
----- <b>TOTAL NJ-NY</b>	<b>181,955</b>	<b>167,710</b>	<b>92.2</b>
<b>EAST RIVER</b>			
Brooklyn-Battery Tunnel	50,108	45,162	90.1
Brooklyn Bridge	134,444	123,944	* 92.2
Manhattan Bridge	73,767	34,877	* 47.2
Williamsburg Bridge	100,243	64,848	* 64.7
Queens-Midtown Tunnel	76,535	69,689	91.1
Queensboro Bridge	184,964	143,323	* 77.5
Tri-Boro Bridge (Manhattan)	89,640	83,898	93.6
Tri-Boro Bridge (Bronx Plaza)	73,276	65,507	89.4
Bronx-Whitestone Bridge	122,434	113,522	92.7
Throgs Neck Bridge	107,860	95,795	88.8
----- <b>TOTAL EAST RIVER</b>	<b>1,013,271</b>	<b>840,565</b>	<b>83.0</b>
<b>HARLEM RIVER</b>			
Willis Avenue Bridge (Northbound)	66,710	55,437	* 83.1
Willis Avenue Bridge (Southbound)	43,065	33,376	* 77.5
Madison Avenue Bridge	41,575	33,676	* 81.0
145th Street Bridge	23,034	19,671	* 85.4
Macombs Dam Bridge	42,254	36,296	* 85.9
Alexander Hamilton Bridge	182,704	147,108	* 80.5
Washington Avenue Bridge	63,154	55,575	* 88.0
University Heights Bridge	50,126	43,760	* 87.3
Broadway Bridge	36,888	33,052	* 89.6
Henry Hudson Bridge	67,612	66,941	99.0
----- <b>TOTAL HARLEM RIVER</b>	<b>617,122</b>	<b>524,892</b>	<b>85.1</b>
<b>GRAND TOTAL</b>	<b>2,787,231</b>	<b>2,426,653</b>	<b>87.1</b>

Source: Bridge and tunnel operators.  
\* Estimated

# REGIONAL TRANSPORTATION



## AT A GLANCE



December  
2005

NEW YORK METROPOLITAN TRANSPORTATION  
COUNCIL

199 WATER STREET  
NY, NY 10038-3534

TEL. 212.383.2518 FAX 212.383.2418

[www.nymtc.org](http://www.nymtc.org)

# 2003

## SELECTED PUBLIC TRANSPORTATION STATISTICS

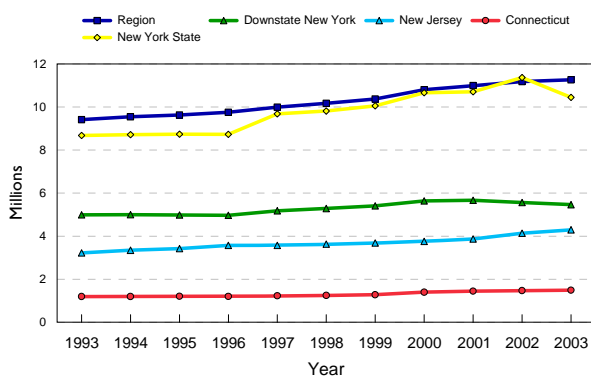
	OPERATING DATA			FINANCIAL DATA				PERFORMANCE MEASURES						REVENUE EQUIPMENT			NATIONAL COMPARISON			
	Annual Psgrs.	Vehicle Miles Traveled	Psgr. Miles Traveled	Operating Expense \$	Operating Revenue \$	Psgr. Revenue \$	Surplus Deficit (f) \$	Psgs. Per Veh. Mile	Psgs. Miles Per Vehicle	Farebox Recovery Ratio (g)	Operating Ratio (h)	Expense Per Psgr. \$	Psgs. Rev. Per Psgr. \$	Deficit Per Psgr. \$	Buses, Boats or Rail Cars	Avg. Age	Avg. Seats	2001 %	2002 %	
<b>NEW YORK</b>	<b>All numbers in millions</b>			<b>All numbers in millions</b>																
<b>BUS TRANSIT</b>																				
MTA/New York City Transit	912.8	116.4	1,646.3	1,659.6	767.2	655.5	-892.4	7.8	14.1	0.39	2.2	1.8	0.7	-1.0	5,051	4	n/a			
NYC Private Operators	102.4	22.3	365.5	290.1	292.3	113.8	2.2	4.6	16.4	0.39	1.0	2.8	1.1	0.0	1,190	11	47			
MTA/Long Island Bus (d)	30.4	12.7	157.1	99.8	37.8	36.7	-62	2.4	12.4	0.37	2.6	3.3	1.2	-2.0	412	4	45			
Long Island Other	5.5	10.0	70.3	36.5	8.4	7.3	-28.1	0.6	7.0	0.20	4.3	6.6	1.3	-5.1	267	5	29			
Westchester	33.6	10.1	163.2	83.3	115.7	80.1	32.4	3.3	16.2	0.96	0.7	2.5	2.4	1.0	427	7	45			
<b>TOTAL DOWNSTATE NY BUS *</b>	<b>1,084.7</b>	<b>171.5</b>	<b>2,402.4</b>	<b>2,169.3</b>	<b>1,221.4</b>	<b>893.4</b>	<b>-947.9</b>	<b>6.3</b>	<b>14.0</b>	<b>0.41</b>	<b>1.8</b>	<b>2.0</b>	<b>0.8</b>	<b>-0.9</b>	<b>7,347</b>	<b>6</b>	<b>42</b>			
<b>RAPID TRANSIT</b>																				
MTA/New York City Transit	1,701.5	334.5	7,820.5	2,378.4	1,964.4	1,690.8	-414	5.1	23.4	0.71	1.2	1.4	1.0	-0.2	6,127	20	n/a			
MTS/Staten Island Railroad	3.4	2.1	21.7	25.3	4.8	4.2	-20.5	1.6	10.3	0.17	5.3	7.4	1.2	-6.0	64	32	n/a			
<b>TOTAL RAPID TRANSIT</b>	<b>1,704.9</b>	<b>336.6</b>	<b>7,842.2</b>	<b>2,403.7</b>	<b>1,969.2</b>	<b>1,695.0</b>	<b>-434.5</b>	<b>5.1</b>	<b>23.3</b>	<b>0.71</b>	<b>1.2</b>	<b>1.4</b>	<b>1.0</b>	<b>-0.3</b>	<b>6,191</b>	<b>26</b>	<b>n/a</b>			
<b>SUBURBAN RAIL</b>																				
MTA/Metro-North Railroad	72.6	48.7	2,058.4	628.8	409.0	378.1	-219.8	1.5	42.3	0.60	1.5	8.7	5.2	-3.0	957	24	n/a			
MTA/Long Island Rail Road	98.0	56.8	2,147.1	830.8	416.1	393.3	-414.7	1.7	37.8	0.47	2.0	8.5	4.0	-4.2	1,130	20	n/a			
<b>TOTAL SUBURBAN RAIL</b>	<b>170.6</b>	<b>105.5</b>	<b>4,205.5</b>	<b>1,459.6</b>	<b>825.1</b>	<b>771.4</b>	<b>-634.5</b>	<b>1.6</b>	<b>39.9</b>	<b>0.53</b>	<b>1.8</b>	<b>8.6</b>	<b>4.5</b>	<b>-3.7</b>	<b>2,087</b>	<b>22</b>	<b>n/a</b>			
<b>FERRY</b>																				
Staten Island	19.2	0.2	99.8	49.6	1.3	0.3	-48.3	96.0	499.0	0.01	38.2	2.6	0.0	-2.5	7	24	2,277			
Private	14.6	0.1	n/a	n/a	n/a	n/a	n/a	n/a	n/a	n/a	n/a	n/a	n/a	n/a	6	10	364			
<b>TOTAL FERRY</b>	<b>33.8</b>	<b>0.3</b>	<b>99.8</b>	<b>49.6</b>	<b>1.3</b>	<b>0.3</b>	<b>-48.3</b>	<b>112.7</b>	<b>332.7</b>	<b>0.01</b>	<b>38.2</b>	<b>1.5</b>	<b>0.0</b>	<b>-1.4</b>	<b>13</b>	<b>17</b>	<b>1,321</b>			
<b>TOTAL NEW YORK TRANSIT</b>	<b>2,994.0</b>	<b>613.9</b>	<b>14,549.9</b>	<b>6,082.2</b>	<b>4,017.0</b>	<b>3,360.1</b>	<b>-2065.2</b>	<b>4.9</b>	<b>23.7</b>	<b>0.55</b>	<b>1.5</b>	<b>2.0</b>	<b>1.1</b>	<b>-0.7</b>	<b>-</b>	<b>-</b>	<b>-</b>			
<b>NEW JERSEY</b>																				
<b>BUS TRANSIT</b>																				
New Jersey Transit	148.3	80.5	928.5	572.3	266.7	237.6	-305.6	1.8	11.5	0.42	2.1	3.9	1.6	-2.1	2,464	5	47			
New Jersey Independents	53.4	44.9	923.4	177.8	197.3	163.6	19.5	1.2	20.6	0.92	0.9	3.3	3.1	0.4	1,304	7	45			
<b>TOTAL NEW JERSEY BUS</b>	<b>201.7</b>	<b>125.4</b>	<b>1,851.9</b>	<b>750.1</b>	<b>464.0</b>	<b>401.2</b>	<b>-286.1</b>	<b>1.6</b>	<b>14.8</b>	<b>0.53</b>	<b>1.6</b>	<b>3.7</b>	<b>2.0</b>	<b>-1.4</b>	<b>3,768</b>	<b>6</b>	<b>46</b>			
<b>RAPID TRANSIT</b>																				
PATH	66.3	11.4	254.0	169.4	79.1	66.2	-90.3	5.8	22.3	0.39	2.1	2.6	1.0	-1.4	259	31	31			
New Jersey Transit Light Rail **	4.1	0.6	11.8	22.1	4.2	3.8	-17.9	6.8	19.7	0.17	5.3	5.4	0.9	-4.4	45	22	69			
<b>TOTAL RAPID TRANSIT</b>	<b>70.4</b>	<b>12.0</b>	<b>265.8</b>	<b>191.5</b>	<b>83.3</b>	<b>70.0</b>	<b>-108.2</b>	<b>5.9</b>	<b>22.2</b>	<b>0.37</b>	<b>2.3</b>	<b>2.7</b>	<b>1.0</b>	<b>-1.5</b>	<b>304</b>	<b>26</b>	<b>35</b>			
<b>SUBURBAN RAIL</b>																				
NJ Transit in NJ	64.6	50.2	1,600.3	529.8	317	283.4	-212.8	1.3	31.9	0.53	1.7	8.2	4.4	-3.3	940	23	120			
NYS West of Hudson	1.5	1.4	40.3	12.3	5.7	5.2	-6.6	1.1	28.8	0.42	2.2	8.2	3.5	-4.4	299	28	70			
<b>TOTAL SUBURBAN RAIL</b>	<b>66.1</b>	<b>51.6</b>	<b>1,640.6</b>	<b>542.1</b>	<b>322.7</b>	<b>288.6</b>	<b>-219.4</b>	<b>1.3</b>	<b>31.8</b>	<b>0.53</b>	<b>1.7</b>	<b>8.2</b>	<b>4.4</b>	<b>-3.3</b>	<b>1,239</b>	<b>23</b>	<b>107</b>			
<b>TOTAL NEW JERSEY TRANSIT</b>	<b>338.2</b>	<b>189.0</b>	<b>3,758.3</b>	<b>1,483.7</b>	<b>870.0</b>	<b>759.8</b>	<b>-613.7</b>	<b>1.8</b>	<b>19.9</b>	<b>0.51</b>	<b>1.7</b>	<b>4.4</b>	<b>2.2</b>	<b>-1.8</b>	<b>-</b>	<b>-</b>	<b>-</b>			
<b>CONNECTICUT</b>																				
<b>BUS TRANSIT</b>																				
Connecticut Transit (i)	11.2	4.4	38.9	29.3	8.5	8.1	-20.8	2.5	8.8	0.28	3.4	2.6	0.7	-1.9	183	7	45			
<b>TOTAL CONNECTICUT TRANSIT</b>	<b>11.2</b>	<b>4.4</b>	<b>38.9</b>	<b>29.3</b>	<b>8.5</b>	<b>8.1</b>	<b>-20.8</b>	<b>2.5</b>	<b>8.8</b>	<b>0.28</b>	<b>3.4</b>	<b>2.6</b>	<b>0.7</b>	<b>-1.9</b>	<b>183</b>	<b>7</b>	<b>45</b>			

### DOWNSTATE NEW YORK SHARE OF NATIONAL PUBLIC TRANSPORTATION

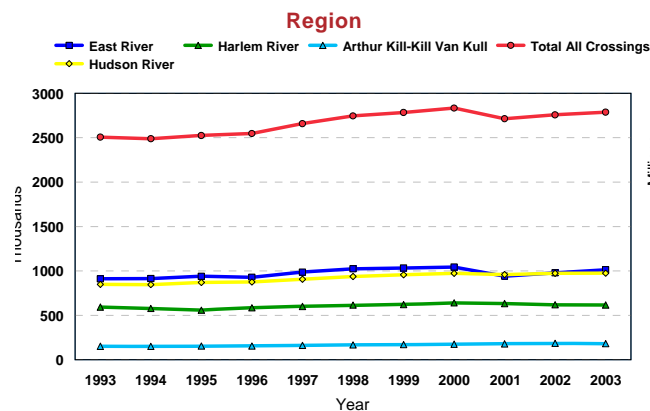
	2001 %	2002 %
<b>BUS TRANSIT</b>		
Total Annual Passengers	17.6	22.1
Total Vehicle Miles	8.7	11.5
Total Passenger Miles	10.8	18.5
Total Operating Expense	19.6	18.9
Total Passenger Revenue	20.9	29.4
Total Passenger Vehicles	13.8	15.5
<b>RAIL RAPID TRANSIT</b>		
Total Annual Passengers	51.7	66.0
Total Vehicle Miles	55.5	56.0
Total Passenger Miles	58.5	59.6
Total Operating Expense	57.3	57.8
Total Passenger Revenue	n/a	64.7
Total Passenger Vehicles	72.8	62.3
<b>SUBURBAN RAIL</b>		
Total Annual Passengers	57.4	57.2
Total Vehicle Miles	61.0	54.4
Total Operating Expense	73.0	61.3
<b>TOTAL NY-NJ-CT % OF NATION</b>		
Total Annual Passengers	34.4	36.9
Total Vehicle Miles	29.8	23.5
Total Operating Expense	28.0	32.6
Total Passenger Vehicles	34.7	23.5

- a- Total excludes NYC Privates
- b- Excludes Subsidies
- c- Covers NY-NJ Operators
- c\*- Covers only pier 11, pier A & WFC
- d- Includes Para transit
- e- Estimated
- f- The deficit is equal to operating revenue minus operating expense
- g- The farebox recovery ratio is equal to passenger revenue divided by expense
- h- The operating ratio is equal to operating expense divided by operating revenue
- i- Fairfield County, New Haven County, Litchfield County. Exclude Transit Districts and Private operators
- n/a- Data not available at press time
- \*- Excludes Hudson Valley Other
- \*\* - Data include Hudson Bergen Light Rail Transit and Newark City Subway

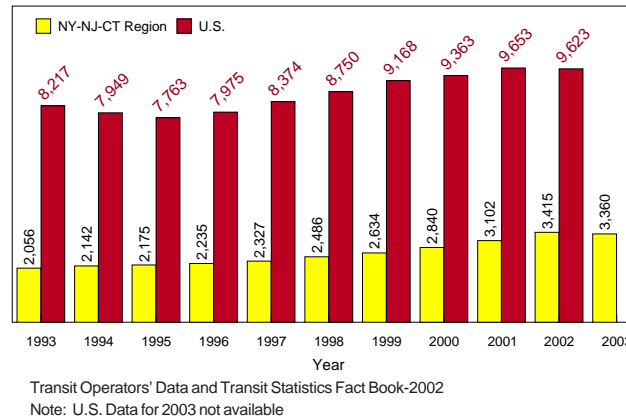
### ANNUAL MOTOR VEHICLE REGISTRATIONS



### MAJOR RIVER CROSSINGS AVERAGE ANNUAL DAILY TRAFFIC



### REVENUE PASSENGERS IN THE REGION



Sources: - Transit Operators data Biennial Statistics CTDOT Bureau of Public Transportation (2000/2001). National Transit Database 2003 (Profiles). APTA 2004 Public Transportation Fact Book. NYMTC estimates.

This brochure is produced in support of the Council's Transportation Plan, and provides an advance update of the data to be covered in the annual Regional Transportation Statistical Report. All brochures and reports are distributed in the interest of information exchange.

For additional information about data in this brochure please call Salvatore Mamone - NYMTC Data Services Bureau Monitoring and Analysis Unit at 212.383.7228, smamone@dot.state.ny.us or visit our website at www.nymtc.org